

Northeast and Eastern Central Florida Area Contingency Plan

Annex 5000: Logistics



VERSION DATE	V_1.6 23AUG05	CLASSIFICATION: UNCLASSIFIED	CONTROLLING AUTHORITY	AREA PLANNING COMMITTEE	ISSUING AUTHORITY	CAPT D.L. LERSCH	PAGE	5000-1
-----------------	------------------	---------------------------------	--------------------------	----------------------------	----------------------	---------------------	------	--------

5000 Logistics

Refer to the Incident Management Handbook (IMH) for the Incident Command System prepared by USCG, Office of Response (G-MOR-3) for specific information on all duties and positions. Refer to Appendix [Incident Management Handbook](#) for the IMH and [ICS Forms Database](#) for ICS forms. This section will only provide a brief overview and information specific to Northeast and Eastern Central Florida.

- 5100 Logistics Section Organization -----3**
 - 5110 Logistics Section Responsibilities -----4
 - 5120 Logistics Functions in Small Responses -----4
 - 5130 When to scale up the Logistics Section -----4
 - 5140 Logistics Section Chief Responsibilities -----4
 - 5150 Typical Logistics Assignments in Northeast Florida -----4
 - 5160 Typical Logistics Assignments in Eastern Central Florida -----4
 - 5170 Logistics Training -----5
 - 5180 Logistics References -----5
 - 5190 Logistics Section Objectives -----5
 - 5191 First Operational Period (0-4 Hours) -----5
 - 5192 Second Operational Period (4-24 Hours) -----5
 - 5193 Third Operational Period (24-48 Hours) -----5

- 5200 Logistics Support Branch Functions, Resources and Capabilities -----5**
 - 5210 Support Branch Responsibilities -----6
 - 5220 Summary Of Suppliers -----6
 - 5221 Towing Companies -----6
 - 5222 Aircraft -----7
 - 5223 Safety Equipment -----7
 - 5230 Facilities -----8
 - 5231 Staging Areas -----8
 - 5232 Fueling Facilities -----10
 - 5233 Maintenance Facilities -----11
 - 5234 Portable Restrooms -----13
 - 5235 Boat Ramps -----13
 - 5236 Hotels/Berthing -----15
 - 5240 Transportation -----16
 - 5250 Command Centers (Fixed/Portable) -----17
 - 5260 Support Suppliers -----19
 - 5270 Ground Support Unit -----19
 - 5280 Vessel Support Unit -----19
 - 5290 Supply Unit -----19

- 5300 Logistics Service Branch Functions, Resources and Capabilities -----20**
 - 5310 Medical Unit -----20
 - 5320 Food Unit -----20
 - 5330 Communications Unit -----21

- 5400 Places of Refuge -----22**

- 5500 Reserved-----23**

- 5600 Reserved-----23**

VERSION DATE	V_1.6 23AUG05	CLASSIFICATION: UNCLASSIFIED	CONTROLLING AUTHORITY	AREA PLANNING COMMITTEE	ISSUING AUTHORITY	CAPT D.L. LERSCH	PAGE	5000-2
-----------------	------------------	---------------------------------	--------------------------	----------------------------	----------------------	---------------------	------	--------

5700 Reserved----- 23

5800 Reserved----- 23

5900 Reserved for Area/District----- 23

5100 Logistics Section Organization

The Logistics Section is responsible for providing facilities, all services and materials needed for the incident. The Incident Commander will determine the need to establish a Logistics Section on the incident. This is usually determined by the size of the incident, complexity of support, and how long the incident may last. Once the IC determines that there is a need to establish a separate Logistics function, an individual will be assigned as the Logistics Section Chief.

Six functional units can be established within the Logistics Section. Branches and Units in the Logistics Section are shown in Figure 1.

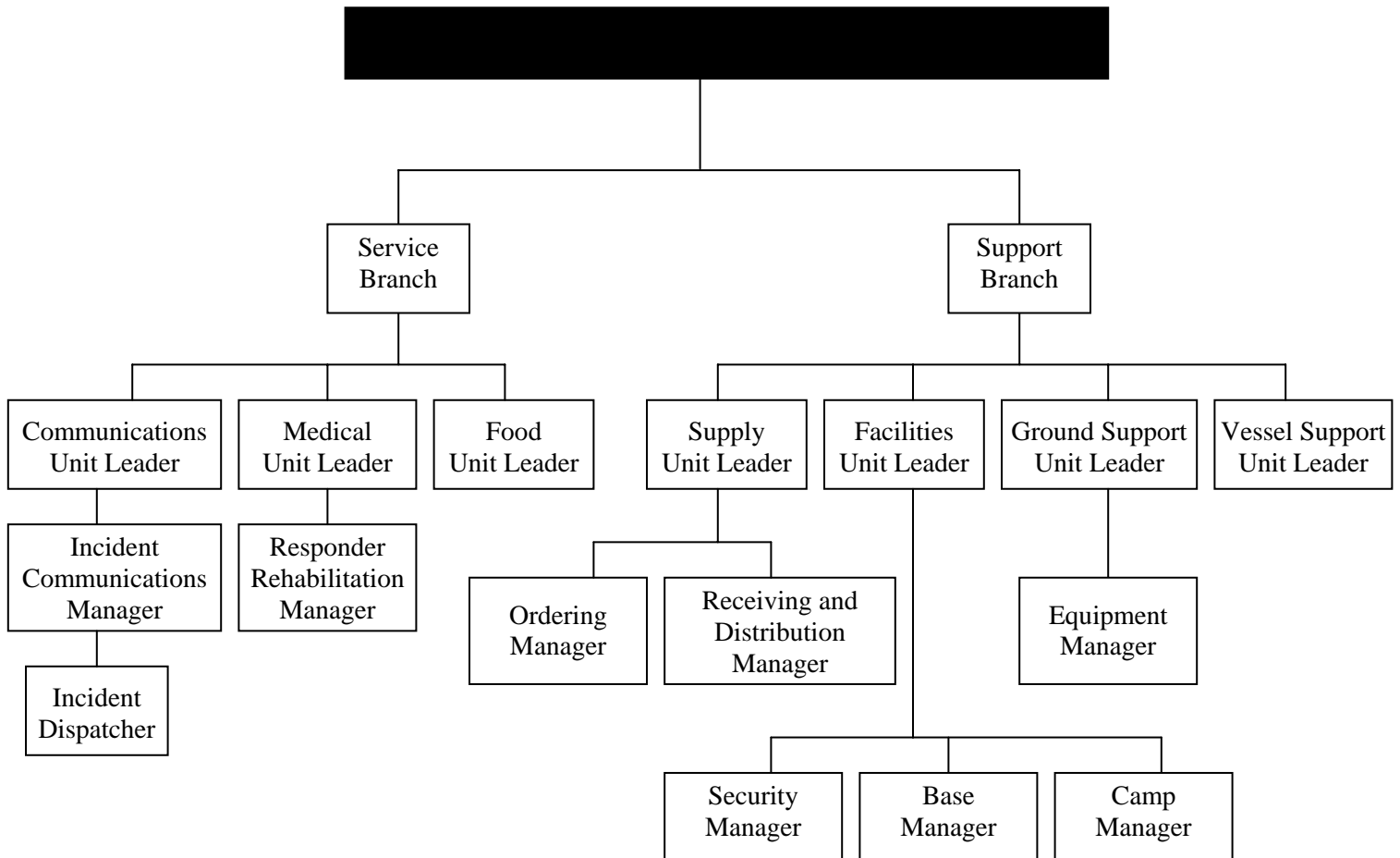


Figure 1 - Logistics Section Organization

VERSION DATE	V_1.6 23AUG05	CLASSIFICATION: UNCLASSIFIED	CONTROLLING AUTHORITY	AREA PLANNING COMMITTEE	ISSUING AUTHORITY	CAPT D.L. LERSCH	PAGE	5000-3
--------------	------------------	---------------------------------	-----------------------	-------------------------	-------------------	---------------------	------	--------

5110 Logistics Section Responsibilities

Responsible for providing facilities, services and material in support of the incident. Participates in the development and implementation of the IAP and activates and supervises branches and units within this Section. Refer to Appendices [9200 Personnel and Services Directory](#), [Communication Plan](#) and [ICS Form Database](#) for additional information.

5120 Logistics Functions in Small Responses

[Reserved for future Area Planning Committee development].

5130 When to scale up the Logistics Section

[Reserved for future Area Planning Committee development].

5140 Logistics Section Chief Responsibilities

The Major responsibilities of the Logistics Section Chief are:

- Review common responsibilities.
- Plan the organization of the logistics section.
- Assign work locations and preliminary work tasks to section personnel.
- Notify the resources unit of the Logistics Section Units activated including names and locations of assigned personnel.
- Assemble and brief Branch Directors and Unit Leaders.
- Participate in preparation of the IAP.
- Identify service and support requirements for planned and expected operations.
- Provide input and review the Communications Plan, Medical Plan and Traffic Plan.
- Coordinate and process requests for additional resources.
- Review the IAP and estimate Section needs for the next operational period.
- Advise on current service and support capabilities.
- Prepare service and support elements of the IAP.
- Estimate future service and support requirements
- Receive incident Demobilization Plan from the Planning Section
- Recommend release of Unit resources in conformity with Incident Demobilization Plan.
- Ensure the general welfare and safety of the Logistics Section personnel.
- Maintain Unit Activity Log [ICS Form 212](#)

5150 Typical Logistics Assignments in Northeast Florida

[Reserved for future Area Planning Committee development].

5160 Typical Logistics Assignments in Eastern Central Florida

[Reserved for future Area Planning Committee development].

VERSION DATE	V_1.6 23AUG05	CLASSIFICATION: UNCLASSIFIED	CONTROLLING AUTHORITY	AREA PLANNING COMMITTEE	ISSUING AUTHORITY	CAPT D.L. LERSCH	PAGE	5000-4
-----------------	------------------	---------------------------------	--------------------------	----------------------------	----------------------	---------------------	------	--------

5170 Logistics Training

[Reserved for future Area Planning Committee development].

5180 Logistics References

[Reserved for future Area Planning Committee development].

5190 Logistics Section Objectives

[Reserved for future Area Planning Committee Development]

5191 First Operational Period (0-4 Hours)

- Establish section at direction of Unified Command.
- Identify resources and vendors required by Operations Section and initiate ordering activities in coordination with Finance Section.
- Identify personnel requirements and initiate ordering activities.
- Establish personnel check in procedures.

5192 Second Operational Period (4-24 Hours)

- Identify and contract for a Unified Command Post as directed by the Unified Commanders.
- Begin equipping the Command Post.
- Mobilize additional response resources as necessary.
- Receive and process all ordered supplies and either store them or dispatch them to the field for use.
- Identify support resources needed by personnel and equipment, initiate, procurement process via the Finance Section.
- As personnel arrive, ensure that they receive an initial incident briefing, are checked in, and are assigned to the appropriate section.
- As possible, ensure that reliefs are provided for initial responders as in-coming personnel become available.

5193 Third Operational Period (24-48 Hours)

- Mobilize additional resources as necessary.
- Establish a resource tracking system to capture use/work/standby hours for all personnel/equipment assigned to the response.
- Develop personnel rotation schedules and relief process in coordination with Operations and Planning Sections. The schedules must ensure that temporarily assigned personnel effectively brief their reliefs prior to departure and that they are not held beyond their parent organization's allowable work schedules.

5200 Logistics Support Branch Functions, Resources and Capabilities

This section describes the overall functioning of the Support Branch within the Logistics Section.

VERSION DATE	V_1.6 23AUG05	CLASSIFICATION: UNCLASSIFIED	CONTROLLING AUTHORITY	AREA PLANNING COMMITTEE	ISSUING AUTHORITY	CAPT D.L. LERSCH	PAGE	5000-5
-----------------	------------------	---------------------------------	--------------------------	----------------------------	----------------------	---------------------	------	--------

5210 Support Branch Responsibilities

Responsible for development and implementation of logistics plan in support of the IAP, including providing personnel, equipment, facilities, and supplies to support incident operations.

5220 Summary Of Suppliers

Summary Of Area Equipment

The equipment lists provided below include equipment with the primary purpose of spill response. The list provided has been listed by equipment type in tabular form making it easier for the planner to assess the general response capability to a particular class of response.

Equipment is also divided into local, area, and regional response organizations. Definitions of local, area, and regional are as follows:

1. Local response organizations either own or operate equipment and are within the area of responsibility of this plan. These organizations should be able to respond to any area within the area of responsibility in less than four hours.
2. Area response organizations are either own or operate equipment but are outside the area of responsibility of this plan. These organizations can be expected to be able to reach the Jacksonville area with heavy equipment by road in less than 12 hours.
3. Regional response organizations are those with extensive response capability. They are greater than 12 hours travel time by road.

The Spill Response Resource Inventory (SRRI), compiled by the NSFCC, should be utilized to identify additional equipment located outside the area covered by this contingency plan.

Please see section 9213 of this plan for the addresses, phone numbers, and points of contact of companies that supply response equipment, such as boom, skimmers, vacuum trucks, and work boats.

5221 Towing Companies

The following is a list of towing companies in the area covered by this plan:

Coastal Tug and Barge	(305) 551-5454
Cross States Towing Co. Inc	(904) 781-5736
Crowley Maritime Corporation	(904) 727-2200
Dixie Towing Corporation	(904) 251-3111 or 249-1312
McAllister Towing of Florida	(904) 751-6228
Mobro Marine Inc. (Jacksonville) (Green Cove Yard)	(904) 737-4401 (904) 358-2869
Sun State Marine Inc	(904) 264-6582 or 246-5682
Trailer Bridge Inc	(904) 751-7107
Canaveral Towing & Salvage	(407) 784-8697
International Towing & Salvage	(407) 799-8697
Port Canaveral Towing Inc	(321) 784-4358
Moran Towing of Florida	(904) 632-4990
Sea Tow Services/Sea Spill (JAX)	(904) 220-7500

VERSION DATE	V_1.6 23AUG05	CLASSIFICATION: UNCLASSIFIED	CONTROLLING AUTHORITY	AREA PLANNING COMMITTEE	ISSUING AUTHORITY	CAPT D.L. LERSCH	PAGE	5000-6
-----------------	------------------	---------------------------------	--------------------------	----------------------------	----------------------	---------------------	------	--------

(St. Augustine) (Port Canaveral)	(904) 824-9969 (321) 868-4900
Boat US (Fernandina) (Jacksonville) (St. Aug. – Daytona - Titusville) (Port Canaveral)	(904) 277-8511 (904) 223-7541 (386) 322-5582 (321) 302-9097
Seabulk International Towing	(321) 799-2827 or 784-4358
Beyel Brothers Crane Service	(321) 868-0161

5222 Aircraft

The following is a list of aircraft rental companies in the area covered by this plan:

Corporate Airways, Jacksonville, FL www.corporate-airways.com	(904) 641-0001
FL Aviation Career Training, Jacksonville, FL www.florida-aviation.com	(904) 642-3912
Florida Institute of Technology www.fit.edu	(321) 674-6500
Island Aviation, Merritt Island, FL www.islandaviation.com	(321) 453-2222

5223 Safety Equipment

The following is a list of safety equipment suppliers in the area covered by this plan:

A AMERICA SAFETY SYSTEMS INC.
3525 Smithfield Street
Jacksonville, FL
(904) 733-1313

ENVIRONMENTAL SAFETY PRODUCTS
11328 Business Park Blvd.
Jacksonville, FL
(904) 260-4383

HOLLEY EDWARDS SALES INC.
650 Talleyrand Avenue
Jacksonville, FL
(904) 355-1671

JACKSONVILLE FIRE & SAFETY EQUIPMENT CO. INC.
1420 Advantage Way, So.
Jacksonville, FL 32218
(904) 356-1672 24hr (904) 355-5210 FAX

SOUTH ATLANTIC CO. INC.
915 South Edgewood Avenue
Jacksonville, FL
(904) 388-0511

VERSION DATE	V_1.6 23AUG05	CLASSIFICATION: UNCLASSIFIED	CONTROLLING AUTHORITY	AREA PLANNING COMMITTEE	ISSUING AUTHORITY	CAPT D.L. LERSCH	PAGE	5000-7
-----------------	------------------	---------------------------------	--------------------------	----------------------------	----------------------	---------------------	------	--------

MINE SAFETY APPLIANCES CO.
 121 Gamma Drive
 Pittsburgh, PA 15238
 (800) 672-2222 (800) 672-5555 (After hour's emergencies)
 (800) 967-0398 FAX

5230 Facilities

5231 Staging Areas

There are two container terminals in the Jacksonville area. These facilities normally have significant uncovered space available for staging trucks and equipment. Cranes for loading equipment onto or off of vessels are readily available. Due to the height of the docks these areas are not readily compatible with small boat operations. Any use of these terminals for other than storage will have an impact on commercial operations. Resistance to use from the Ports Authority can be expected.

In the port of Cape Canaveral the most suitable staging areas may be the public boat ramps at Ports End Park or Dolphins Leap Marina. The roll-on/roll-off (RO/RO) ramp by the cruise terminals may be used for staging or setting up a command post if a ship is not berthed at the ramp. The Canaveral-Brevard County Spillage Cleanup Committee, Inc. stores response equipment at this site. Access is continuously available through the Mid-Florida Freezer gate on Heron Street.

A spill occurring off the tip of the Cape with a south wind may contaminate beaches on NASA property or the Canaveral National Seashore. The only unrestricted access to the area is on Playalinda Beach north of the Cape, via State Road 402 from Titusville. Public access gates on State Road 402 may be closed if a Space Shuttle is within 72 hours of launch. The security contractor for NASA, EG&G, should be contacted at (407) 867-2121 if access is needed.

If a spill occurs in the Indian River north of State Road 528 the equipment may be staged at the public boat ramp at Sharpes at U.S. 1, the Coast Guard Auxiliary facility or the Titusville Marina ramps in Titusville on State Road 402, or Kelly Park on State Road 528 on the west side of the Banana River. The causeways along the NASA Parkway, State Road 528, and State Road 520 may also facilitate limited deployment capabilities.

A spill occurring in the Banana River north of State Road 528 could be accessed via Kelly Park. Precautions should be taken to restrict vessel traffic in the Barge Canal, or locks, if spilled materials or cleanup operations pose a danger to navigation.

The following is a list of airports that could be used as staging areas:

AIRPORT	RUNWAY	PHONE NUMBER
Jacksonville International	07/25:8000 X 150 13/31:7700 X 150	(904) 741-2000
Craig Municipal, Jacksonville	05/23:4001 X 100 14/32:4007 X 100	(904) 641-7666 ATC 641-3022
Herlong, Jacksonville	14/32:4007 X 100 05/23:4001 X 100	(904) 783-2805 e-mail: aimeeh@jaxairports.org
St. Augustine Airport	02/20:2610 X 75 06/24:2701 X 75 13/31:6939 X 150	(904) 825-6860 Fax (904)825-6843 E-mail: erw@staugustineairport.com

VERSION DATE	V_1.6 23AUG05	CLASSIFICATION: UNCLASSIFIED	CONTROLLING AUTHORITY	AREA PLANNING COMMITTEE	ISSUING AUTHORITY	CAPT D.L. LERSCH	PAGE	5000-8
-----------------	------------------	---------------------------------	--------------------------	----------------------------	----------------------	---------------------	------	--------

AIRPORT	RUNWAY	PHONE NUMBER
Flagler County Airport Bunnell, FL	11/29:5000 X 150 06/24:5000 X 150 18/36:3000 X 500	(386) 437-0401 e-mail: airports@fcbcc.org (Water)
Fernandina Beach Municipal Fernandina Beach Municipal (continued)	04/22:5350 X 100 13/31:5150 X 150 08/26:5000 X 150 17/35:5000 X 150	(904) 261-7890
Ormond Beach Municipal	08/26:4004 X 100 17/35:3701 X 100	(386) 677-5724 (888) 621-5087 Email: Info@flysunrise.com
Daytona Beach Regional	07L/25R:7500 X 150 07R/25L:3197 X 100 16/34:4000 X 150	(904) 255-8441 ATC 255-3216
Deland Municipal	05/23:4370 X 100 12/30:6000 X 100	(386) 740-5808
New Smyrna Beach Municipal	11/29:4950 X 100	(904) 424-2199 Email rwilsbach@city.dsm
Orlando Sanford Int. Airport	09L/27R:8001 X 150 18/36:6002 X 150 09R/27L:3578 X 150	(407) 322-7771 (407) 585-4000
Melbourne Regional Airport	04/22:3002 X 100 09L/27R:6000 X 100 09R/27L:9481 X 150	(407) 723-6227
Gateway Aviation Space Coast Regional		(321) 267-1345 (321) 269-7888 email info@heli.com
Orlando County		(407) 886-7663 (352) 267-4071
Orlando International	17/35:10000 X 150 18L/36R:12004 X 200 18R/36L:12004 X 200	(407) 825-2001 Fax (407) 857-4079
Merritt Island Airport	11/29:3601 X 75	(321) 453-2222
Airport Authority, Titusville		(321) 267-8780
Discovery Aviation		(321) 267-6043 Fax (321) 267-0129 Email Discovery@discoveryaviation.com
Tico Executive Aviation		(321) 267-8355 (800) 559-5487 (888)-321-8426 Fax (321) 267-0129 Email Tico@ticoaviation.com
Arthur Dunn Airport	15/33 3000 X 70 4/22 1790 X 100 (turf)	(321) 267-8780
Naval Station Mayport, FL	05/23:8000 X 200	(904) 270-6130
Naval Air Station Cecil Field, FL	09L/27R:8002 X 200 09R/27L:8002 X 200 18L/36R:12503 X 200 18R/36L:8002 X 200	(904) 778-2821

VERSION DATE	V_1.6 23AUG05	CLASSIFICATION: UNCLASSIFIED	CONTROLLING AUTHORITY	AREA PLANNING COMMITTEE	ISSUING AUTHORITY	CAPT D.L. LERSCH	PAGE	5000-9
-----------------	------------------	---------------------------------	--------------------------	----------------------------	----------------------	---------------------	------	--------

AIRPORT	RUNWAY	PHONE NUMBER
Naval Air Station Jacksonville, FL	09/27:8000 X 200 14/32:5977 X 200	(904) 542-2345
Patrick AFB, Cape Canaveral, FL	02/20:9022 X 260 11/29:4000 X 200	(321) 494-2222
NASA Shuttle Landing, Cape Canaveral, FL	15/33:15000 X 300	(321) 867-2100 Ops Room
Cape Canaveral AFS	13/31:10000 X 300	(321) 853-5941

5232 Fueling Facilities

Land based fueling facilities will not be addressed in this exhibit due to their wide availability. Little difficulty is normally experienced in finding gas stations which will take Federal Government credit cards.

The following Marine Fueling Facilities can provide both gasoline and diesel fuel for response vessels:

Daytona Beach	Inlet Harbor Marina	(904) 761-6033
Fernandina Beach	Amelia Island Yacht Basin	(904) 277-4615
	Fernandina Harbor Marina	(904) 491-2090
Jacksonville	Arlington Marina	(904) 743-2628
	Lamb's Yacht Center	(904) 384-5577
	Mayport Marine	(904) 246-8929
	Monty's Marina	(904) 246-7575
	Pablo Creek Marina Inc N/A	(404) 352-2800
	Pelican Creek Boatyard & Marina	(904) 292-5270
Melbourne	Anchorage Yacht Basin Inc.	(321) 773-3620 (321) 729-8400 Fax
	Harbor Marine Of Brevard Inc.	(321) 725-9054
	Intracoastal Marina Melbourne Inc.	(321) 725-0090
Merritt Island	Indian Cove Marina, Inc.	(321) 452-8540
	Sea Ray Boats Inc.	(321) 452-6710 (321) 454-4799
	Tingley's Rv Park & Fish Camp	(321) 452-0504
Palatka	Boathouse Marina	(386) 328-2944 24hr (386) 325-3932 Fax
Ponce de Leon Inlet	Lighthouse Boat Yard & Yacht Sales	(386) 767-0683 (386) 767-0696 (386) 767-8819 Fax
Saint Augustine	Camachee Cove Yacht Harbor	(904) 829-5676
	Conch House Marina Resort	(904) 829-8646
	River Bend Harbor Marine	(904) 825-4666
Titusville	Kennedy Point Yacht Club & Marina	(321) 383-0280 (321) 269-0771 Fax

VERSION DATE	V_1.6 23AUG05	CLASSIFICATION: UNCLASSIFIED	CONTROLLING AUTHORITY	AREA PLANNING COMMITTEE	ISSUING AUTHORITY	CAPT D.L. LERSCH	PAGE	5000-10
--------------	------------------	---------------------------------	-----------------------	-------------------------	-------------------	---------------------	------	---------

	Westland Marina	(321) 267-1667 (321) 267-0844 D/T Fax (321) 383-1334 24hr
--	-----------------	---

5233 Maintenance Facilities

During a prolonged response two types of maintenance will almost certainly be required, vehicles, and outboard motors.

For Federal agencies, vehicle maintenance must be handled through GSA channels or by following the instructions of the rental car agency for rental vehicles. Non-federal agencies will continue to use their normal repair procedures. Numerous vehicle repair facilities are available throughout the area of responsibility.

The factory authorized service facilities for outboard motors located in our area of responsibility are:

Outboard Motor Service Facilities	Evinrude & Johnson (OMC)	Suzuki	Yamaha	Mercury
Ortega River Boatyard 4451 Herschel Street Jacksonville, FL (904) 387-5538	X			
Becks Outboard Shop Kaye Hardag 1257 Broward Road Jacksonville, FL (904) 765-9910 (904) 764-4957 Fax	X			
Tomoka Marine John Mott 2751 Moody Blvd. Flagler Beach, FL (386) 439-3838 (386) 673-8932 24hr (386) 439-3705 Fax	X			
Camp Henry Marina Star Road Georgetown, FL (386) 467-2282	X			
Blue Water Boats Doug Schimm 730 Ridgewood Holly Hills, FL (386) 255-7790 (386) 239-0930 Fax (Not on water)	X			
Brevard Marine Service Joanna Stone 2200 West King Street Cocoa, Fl	X			

VERSION DATE	V_1.6 23AUG05	CLASSIFICATION: UNCLASSIFIED	CONTROLLING AUTHORITY	AREA PLANNING COMMITTEE	ISSUING AUTHORITY	CAPT D.L. LERSCH	PAGE	5000-11
--------------	------------------	---------------------------------	-----------------------	-------------------------	-------------------	---------------------	------	---------

Outboard Motor Service Facilities	Evinrude & Johnson (OMC)	Suzuki	Yamaha	Mercury
(321) 452-8250 (321) 636-5222 Fax				
Aloha Marine Inc. 1700 N. Nova Rd. Holly Hills, FL (386) 255-2345 (386) 255- 3309 Fax (moved inland)		X		
Westland Marine Greg Nelson 419 N. Washington Ave. Titusville, FL (321) 267-1667 (321) 267-0844 Fax		X	X	
Altamaha Marine 1720 E. Cherry Street Jessup, GA (912) 427-9915		X		
Ellis Marine Bobby Ellis 3687 Community Road Brunswick, GA (912) 264-4024 (912) 265-5689 Fax			X	X
Bass Pro Shop's Outhouse Marine Tim Soles (Manager) 7762 Blanding Blvd. Jacksonville, FL (904) 777-1383 (904) 777-0104 Fax			X	
First Coast Marine 2100 Florida Blvd. Neptune Beach, FL (904) 246-1614			X	X
Palatka Marine Inc. 625 Highway 19 S. Palatka, FL (386) 328-0100			X	
Vero Marine Center 12 Royal Palm Blvd. Vero Beach, FL (321) 562-7922			X	
Fordham Marine Service 1336 University Blvd. North Jacksonville, FL 32211 (904)743-2140				X
Luhrs Corporation 255 Diesel Road St. Augustine, FL				X

Outboard Motor Service Facilities	Evinrude & Johnson (OMC)	Suzuki	Yamaha	Mercury
(904) 829-0500 (904) 827-2156				
Bridge Boat Work Marina 800 Moody Blvd. Flagler Beach, FL (386) 439-0081				X
Titusville Marina 451 Marina Road Titusville, FL (321) 383 5600 (321) 242-7120 24hr (321) 383-5602 Fax				X
Cape Marina 800 Scallop Drive Port Canaveral, FL (321) 783-8410 (321) 799-3271 Fax				X

5234 Portable Restrooms

Portable toilets are available at the following locations:

(for the northern section)

Waste Management, Jacksonville, FL	(904) 388-5307
Amason's, Jacksonville, FL	(904) 276-4828
C&J Portable Toilets	(904) 292-1981

(for the southern section)

Anderson Rentals, Inc., Daytona Beach, FL	(386) 255-2255
Big Bertha Portable Toilet Rentals, Daytona Beach, FL	(386) 788-9878
Godawa Septic Tank Service, Daytona Beach, FL	(386) 767-7721
Herb Weems Plumbing, Daytona Beach, FL	(386) 253-4133

5235 Boat Ramps

The following is a list of public boat ramps in the Sector Jacksonville area that could be used for launching response equipment.

DUVAL COUNTY / ST. JOHNS RIVER

- Hood Landing (Julington Creek) Foot of Hood Landing Rd.
- County Dock, Foot of County Dock Road, Mandarin
- Fishing Creek (Fishing Creek/Ortega River), 4555 Ortega Farms Rd.
- Riverwalk, west end of Riverwalk next to Harbormasters
- Arlington Road, Foot of Arlington Road, West of University Blvd.
- Lonnie Wurn, 4131 Ferber Road, off Ft. Caroline Rd. and Heath St.

VERSION DATE	V_1.6 23AUG05	CLASSIFICATION: UNCLASSIFIED	CONTROLLING AUTHORITY	AREA PLANNING COMMITTEE	ISSUING AUTHORITY	CAPT D.L. LERSCH	PAGE	5000-13
--------------	------------------	---------------------------------	-----------------------	-------------------------	-------------------	---------------------	------	---------

- Mayport, Ocean Street, East of Ferry Slip on A1A

DUVAL COUNTY / INTRACOASTAL WATERWAY

- Sisters Creek, at Hechsher Drive across from Atlantic Marine
- Oak Harbor, Foot of Deaway Street
- Beach Blvd., next to the Florida Marine Patrol station

DUVAL COUNTY / ST. JOHNS TRIBUTARIES

- Big Pottsburg Creek, Beach Blvd., south of bridge at Grove Park
- Dinsmore, US 1 north at Dinsmore on Trout River
- Bert Maxwell, off Broward Road near I95 on Trout River
- Harbor View, off Soutel Drive, on the Ribault River

NASSAU COUNTY / INTRACOASTAL WATERWAY

- Fernandina City, Foot of Ash Street near Fernandina Harbor Marina
- Fort Clinch, at Fort Clinch State Park on A1A
- Loftin Creek, Wayside Park A1A, between Fernandina Bch and Yulee
- Wilson Neck Landing, Claxton Road, Cuno Creek / Nassau River
- Holly Point Subdivision, SR 207 Christopher Creek / Nassau River
- Buccaneer Trail, A1A north end of Nassau River Bridge

NASSAU COUNTY / ST. MARYS RIVER

- Tompkins Landing, SR 121
- Walker's Landing, SR 121A, Hampton Road

PUTNAM COUNTY / ST. JOHNS RIVER

- SR 209A, St. Johns Harbor subdivision, west bank
- East Palatka, off East River Road, east bank
- US 17, East Palatka, at end of Boat Ramp Road
- City Dock, downtown Palatka at City Marina
- Brown's Landing, Foot of Lundy Road, west bank
- SR 309, Shell Harbor Road, east bank
- Welaka, SR 309, Welaka
- Georgetown, SR 309 in Georgetown
- Fort Gates Ferry Landing, west bank

ST. JOHNS COUNTY / INTRACOASTAL WATERWAY

- Old Boating Club, A1A above Vilano Beach
- St. Johns County Park, A1A east of Vilano Beach bridge
- Lighthouse Park, at St. Augustine Light, Davis Shores, A1A S.
- Green Road, A1A South, Crescent Beach
- Butler Park, A1A South, Crescent Beach

ST. JOHNS COUNTY / ST. JOHNS RIVER

- Riverdale, secondary road 13A off SR 13
- McCullough Creek, SR 13 south of Riverdale

CLAY COUNTY / ST. JOHNS RIVER

- Old Shands Bridge, SR 16
- Lakeshore Drive, SR 220
- Williams Park, SR 209 off US 17 South, Green Cove Springs

VERSION DATE	V_1.6 23AUG05	CLASSIFICATION: UNCLASSIFIED	CONTROLLING AUTHORITY	AREA PLANNING COMMITTEE	ISSUING AUTHORITY	CAPT D.L. LERSCH	PAGE	5000-14
-----------------	------------------	---------------------------------	--------------------------	----------------------------	----------------------	---------------------	------	---------

BREVARD COUNTY / INTERCOASTAL WATERWAY

- Bourbeau Park, West SR 520, Cocoa
- Fox Lake Park, 4400 fox Lake Road, Titusville
- Kelly Park, 2550 N. Banana River Drive, Merritt Island
- Kiwanis Island Park, 950 Kiwanis Road, Merritt Island
- Lee Wenner Park, Riveredge Drive and SR 520, Cocoa
- Manatee Hammock Park, 7272 South US 1, Titusville
- Marina Park, 451 Marina Road, Titusville
- McFarland Park, Coquina Drive and River Road, Cocoa

BREVARD COUNTY / PORT CANAVERAL

- Ports End Park, Mullet Drive, Port Canaveral

5236 Hotels/Berthing

Hotels/motels with restaurant facilities are located in the following cities:

CITY	HOTEL/MOTEL	PHONE NO
Atlantic Beach	Sea Turtle Inn	(904) 249-7402 (904) 247-1517 Fax
Cocoa Beach	Hilton Inns	(321) 799-0003
	GM Deborah Green	(321) 799-0344 Fax
	Holiday Inn	(321) 783-2271
	Howard Johnson Plaza GM Christy Galzerbono	(321) 783-9222 (321) 799-3234 Fax
Daytona Beach	Plaza Resort GM Steve Dorsey	(386) 255-4515 (386) 232-7989 Fax
	Double Stay Inn GM Mr. William Tarmenn www.doublestay.us	(386) 255-5432 (386) 254-0885 Fax
	Hilton Garden Inn GM Richard Pazmino Richard_Pazmino@hilton.com	(386) 944-4000 (386) 944-4001 Fax
	Holiday Express Inn (I-95 & Speedway Blvd) GM John Bristol Email Jbristol@daytonaholidayinn.com	(386) 258-6333 (386) 254-3611 Fax
	Hilton Inn GM Stanley Martin	(386) 767-7350
	Bermuda House	(386) 672-1440 (386) 677-8811 Fax
	LaQuinta Inn GM Clint Friddel Email LQ0904GM@LaQuinta.com	(386) 255-7412 (386) 255-5350 Fax
	Fernandina Beach	Best Western

VERSION DATE	V_1.6 23AUG05	CLASSIFICATION: UNCLASSIFIED	CONTROLLING AUTHORITY	AREA PLANNING COMMITTEE	ISSUING AUTHORITY	CAPT D.L. LERSCH	PAGE	5000-15
--------------	------------------	---------------------------------	-----------------------	-------------------------	-------------------	---------------------	------	---------

	GM Ruby Ovellette	(904) 277-1839 Fax
Jacksonville	Radisson Bob Meyer Director BobMyer@radjax.com	(904) 396-5100 (904) 396-8007 Fax
	Holiday Inn Surfside GM Jeff Truhler	(904) 249-9071 (904) 241-4321 Fax
	South Point Inn GM Stewart Bloomberg	(904) 281-9700 (904) 281-1957 Fax
	Marriott Hotels GM Kevin Shea Email Kevin.Shea@marriott.co	(904) 296-2222 (904) 296-3450 Fax
	Omni Jacksonville Hotel GM Bob White Email RGWhite@omnihotels.com	(904) 355-6664 (904) 791-4810 Fax
	Quality Inn and Suite GM Mark Tomlinson	(904) 741-4600 (904) 741-4424
Melbourne	Howard Johnson GM Agnes Worboy	(321) 768-8439 (321) 768-8666
Merritt Island	Clarion Inn GM Onsi Ali	(321) 452-7711 (321) 452-9462 Fax
St. Augustine	Holiday Inn GM Mark Fink Email HolidayAug@aol.com	(904) 471-2555 (904) 461-8450 Fax
	Super 8 GM Mike Avino	(904) 829-5686
	Howards GM Don Craven Email Craven@Aug.com	(904) 471-2575 (904) 471-1247 Fax
	Ramada Inn Historic	(904) 824-4352 (904) 824-2745 Fax
	Alhambra Inn GM Jim Byles	(904) 824-2883 (904) 825-0976 Fax
Titusville	Highway Inn	(321) 269-9310 (321) 267-6859 Fax
	Best Western Space Shuttle Inn Email GM@spaceshuttleInn.com	(321) 269-9100 (321) 383-4674 Fax
	Days Inn	(321) 269-4480
	Ramada Inn GM Jim Burns	(321) 269-5510 (321) 269-3796

5240 Transportation

Each organization responding to a pollution incident will be normally be responsible for its own transportation needs.

VERSION DATE	V_1.6 23AUG05	CLASSIFICATION: UNCLASSIFIED	CONTROLLING AUTHORITY	AREA PLANNING COMMITTEE	ISSUING AUTHORITY	CAPT D.L. LERSCH	PAGE	5000-16
-----------------	------------------	---------------------------------	--------------------------	----------------------------	----------------------	---------------------	------	---------

Additional vehicles required to meet the increased ground transportation will normally be rented unless it is clear that the response will last in excess of 1 month. For long spills obtaining additional vehicles through lease agreements or through GSA for federal vehicles may be appropriate. Whether individuals or agencies rent the necessary vehicle is at the discretion of the agency. Additional vehicles for Coast Guard use will be rented by persons on travel orders and the cost included in their travel claim.

The contractor should provide transportation of contractor equipment and personnel by boat to conduct cleanup operations. Efficiency will dictate transportation to or from remote locations to evaluate an incident. Monitoring organization personnel may be transported by contractor boats or vice versa.

The following is a partial list of truck and car rental companies in the area covered by this plan:

City	Company	Phone Number
Jacksonville	Enterprise Rent-A-Car	(904) 396-0339 (904) 396-0534 Fax
	Ryder Trucks	(904) 781-1661
	Budget Car and Truck Rental	(800) 527-7000
	Dollar Rent-A-Car	(904) 741-4444 (904) 741-6008 Fax
	Thrifty Car Rental	(904) 741-1004 (904) 741-0022 Fax
	Avis	(904) 741-2327 (904) 741-4494 Fax
	Hertz Rent-A- Car	(904) 741-2151 (904) 741-2150 Fax
St. Augustine	Enterprise Rent-A-Car	(904) 829-1662 (904) 824-4762 Fax
Titusville	Budget Car and Truck Rental	(321) 268-5415 (321) 383-4187 Fax
Cape Canaveral	Thrifty Car Rental	(321) 783-2600
	Budget Trucks	(321) 783-6694 (321) 632-4070
Cocoa	Hertz Penske Truck Rental	(321) 639-2070 (321) 636-5405
Merritt Island	Enterprise Rent-A-Car	(321) 453-8710 (321) 455-6478
Melbourne	Hertz Penske Truck Rental	(321) 242-1565

5250 Command Centers (Fixed/Portable)

The requirements for, and location of, a command center are highly spill dependent. For major spills in the Jacksonville area, the City of Jacksonville Emergency Operations Center provides an ideal location. This facility is used in times of emergency, particularly hurricanes. It is fully telephone and radio equipped. The building is large

VERSION DATE	V_1.6 23AUG05	CLASSIFICATION: UNCLASSIFIED	CONTROLLING AUTHORITY	AREA PLANNING COMMITTEE	ISSUING AUTHORITY	CAPT D.L. LERSCH	PAGE	5000-17
-----------------	------------------	---------------------------------	--------------------------	----------------------------	----------------------	---------------------	------	---------

enough to accommodate all necessary parties including the media. The layout is such that the media can be kept away from actual operations.

The Coast Guard also has a mobile command post. This facility is radio equipped. In a major event this trailer would be very effective in directing or monitoring activities on scene. For smaller events this trailer would be effective as a command post.

The Navy submarine base at Kings Bay also has a mobile command post that can be made available to the Coast Guard in a major event. This facility is radio equipped and would be supplied with Navy personnel familiar with its equipment. For more info, contact the base Emergency Management office at 912-573-4840.

The Army Corps of Engineers located in Jacksonville has a mobile command center that may also be available in an emergency. This facility is radio equipped and can support a portable computer system. For more info, contact the ACOE at (904) 232-2241. In addition, the Florida Department of Law Enforcement (FDLE) in downtown Jacksonville has large, functional conference rooms available for use. For more info, call (904) 360-5796.

In major events, contractors will certainly be involved. Major contractors generally have mobile command posts. In keeping with current policy of cooperation between monitoring organizations and contractors, these contractor assets can prove to be very effective in enhancing command and control.

The following possible command post locations, hotels with adequate conference room facilities, have been identified:

JACKSONVILLE

Sea Turtle Inn & Conference Center

1 Ocean Blvd.
Atlantic Beach, FL (904) 249-7402

Radisson Riverwalk Hotel

1515 Prudential Drive
Jacksonville, FL (904) 396-5100

FERNANDINA BEACH

Best Western

2707 Sadler Road
Fernandina Beach, FL (904) 277-2300

ST. AUGUSTINE

Holiday Inn

860 A-1A
St. Augustine, FL (904) 471-2555

Howard Johnson's

300 A1A
St. Augustine, FL (904) 471-2575

DAYTONA BEACH

Hilton

2637 South Atlantic Blvd.

VERSION DATE	V_1.6 23AUG05	CLASSIFICATION: UNCLASSIFIED	CONTROLLING AUTHORITY	AREA PLANNING COMMITTEE	ISSUING AUTHORITY	CAPT D.L. LERSCH	PAGE	5000-18
-----------------	------------------	---------------------------------	--------------------------	----------------------------	----------------------	---------------------	------	---------

Daytona Beach, FL (386) 767-7350

Adams Mark Daytona Beach

100 North Atlantic Blvd.
Daytona Beach, FL (386) 254-8200

CAPE CANAVERAL

Cocoa Beach Hilton

1550 North Atlantic Avenue
Cocoa Beach, FL (321) 799-0003

Holiday Inn Merritt Island

260 East Merritt Island Causeway
Merritt Island, FL (321) 452-7711

5260 Support Suppliers

The following link gives a list of suppliers: [9200 Personnel Services – Cleanup Companies](#)

5270 Ground Support Unit

Primarily responsible to support “out of service” resources, the coordination and transportation of personnel, supplies, food and equipment. In addition to the maintenance and repair of vehicles and other ground support equipment, this division would implement the traffic plan for the incident.

5280 Vessel Support Unit

Responsible for implementing the vessel routing plan for the incident and coordinating transportation on the water and between shore resources. This may include arranging fueling, maintenance and repair of vessels on a case-by-case basis.

5290 Supply Unit

Responsible for requesting additional personnel based on Operations and Planning needs. The Supply Unit also orders equipment and supplies; receives and stores all supplies for the incident; maintains an inventory of supplies; and services all equipment. Additionally, the Supply unit is responsible for layout and activation of incident facilities. They provide sleeping and sanitation facilities for incident personnel and manage the various bases, staging areas, and camps.

5300 Logistics Service Branch Functions, Resources and Capabilities

Responsible for the management of all service activities at the incident. Refer to Appendices [9200 Personnel and Services Directory](#), [9340 Communication Plan](#) and [9720.200 ICS Form Database](#) for additional information.

VERSION DATE	V_1.6 23AUG05	CLASSIFICATION: UNCLASSIFIED	CONTROLLING AUTHORITY	AREA PLANNING COMMITTEE	ISSUING AUTHORITY	CAPT D.L. LERSCH	PAGE	5000-19
--------------	------------------	---------------------------------	-----------------------	-------------------------	-------------------	---------------------	------	---------

5310 Medical Unit

Responsible for the development of the Medical Emergency Plan, obtaining medical aid and transportation for injured and all incident personnel, and preparations of reports and records. Refer to Appendices [9110 Emergency Notification List](#), [9240.200 EMERGENCY MEDICAL/HOSPITALS](#), and [9720.200 ICS Form Database](#) for additional information.

- (1) Provide and coordinate emergency and routine medical services to response personnel.
- (2) Manage dedicated Medical Unit resources and coordinate additional medical services.
- (3) Identify resources and logistics support needs.
- (4) Report the status of Medical Unit Services.

5320 Food Unit

Responsible for determining feeding requirements at all incident facilities; menu planning; determining cooking facilities required; food preparation; serving; providing potable water; and the general maintenance of food service areas. To obtain information on food distributors, contact the State EOC in Tallahassee, FL. The State EOC will contact the appropriate disaster relief effort organization. Refer to Appendices [9110 Emergency Notification List](#), [9200 Personnel and Services Directory](#), and [9720.200 ICS Form Database](#) for additional information.

- (a) Provide and coordinate meals and subsistence support to response personnel.
- (b) Plan, document, and account for the number and type of meals required.
- (c) Establish kitchens, galleys, canteens, and other food services support locations.
- (d) Establish and manage sources of supply to support meal and subsistence requirements.
- (e) Provide potable drinking water, coolers, and other beverages required to support response operations.
- (f) Identify additional resources and logistics support needs.
- (g) Report on the status of food and subsistence services.

Some places that have been used in the past include:

J. & M. CATERERS
593 Sun Garden Road
Green Cove Springs, FL
(800) 427-6718

BLUE BOY SANDWICH SHOP
5535 Ft. Caroline Road
Jacksonville, FL
(904) 743-3515

BONO'S PIT BAR-B-Q
10645 Phillips Hwy
Jacksonville, FL
(904) 886-2801

WOODY'S BAR-B-Q AND CATERING

VERSION DATE	V_1.6 23AUG05	CLASSIFICATION: UNCLASSIFIED	CONTROLLING AUTHORITY	AREA PLANNING COMMITTEE	ISSUING AUTHORITY	CAPT D.L. LERSCH	PAGE	5000-20
-----------------	------------------	---------------------------------	--------------------------	----------------------------	----------------------	---------------------	------	---------

6960 Bonneval Road
Jacksonville, FL
(904) 269-6948

THE BEST BARBECUE COMPANY

2951 Hessey Avenue
Palm Bay, FL
(407) 725-2801

FAT BOY'S BAR-B-Q

4280 South Washington Avenue
Titusville, FL 32780
(321) 267-3468

ISLAND BAR-B-Q

1050 North Courtenay Parkway
Merritt Island, FL
(321) 452-4432

5330 Communications Unit

Responsible for developing plans for the effective use of incident communication equipment and facilities; installing and testing of communications equipment; supervision of the Incident Communication Center; distribution of communication equipment to incident personnel; and the maintenance and repair of communication equipment. Refer to Appendices [9200 Personnel and Services Directory](#), [9340 Communication Plan](#) and [9720.200 ICS Form Database](#) for additional information.

- (1) Develop, Implement, and coordinate the Incident Communications Plan.
- (2) Deliver, issue, track, maintain, support and recover communications resources, telephones, radios, base stations, repeaters, and other communications facilities.
- (3) Identify additional communications resources or logistics needs.
- (4) Report on the status of communications capabilities and operations.

For events occurring in the Jacksonville area, little communications difficulty can be expected except in the area of radio communications. In the Jacksonville area all organizations are either at or near their office spaces so fax and hardwired telephones are readily available. Cellular phones are also within their home exchange, which will improve reception and ease use. The primary difficulties with radio communications are the limited range of Sector Jacksonville's radio and incapability when public emergency resources such as fire departments are involved. These organizations operate on the 800 MHz band as opposed to the marine band. The Coast Guard has no 800 MHz capability.

Communications outside the Jacksonville area will prove to be more difficult. The Coast Guard and many commercial response organizations have mobile command posts from which communications may be conducted. In a prolonged response obtaining hard wire telephone capability to mobile command posts should be a high priority. Radio communications to public emergency response organizations will be more difficult outside of the Jacksonville area due to the reduced availability of equipment. The sharing of equipment between organizations is the best solution for this problem.

For service and purchase of	Select Communications, 1511 Cesery Blvd.,
-----------------------------	---

VERSION DATE	V_1.6 23AUG05	CLASSIFICATION: UNCLASSIFIED	CONTROLLING AUTHORITY	AREA PLANNING COMMITTEE	ISSUING AUTHORITY	CAPT D.L. LERSCH	PAGE	5000-21
-----------------	------------------	---------------------------------	--------------------------	----------------------------	----------------------	---------------------	------	---------

800 MHz two-way radio systems and other types of communications systems	Jacksonville, FL (904) 641-5055
For emergency telephone service	Call TT Dept of ESD Mayport (904) 270-0724
For additional mobile phone purchase and service	Nextel Communications 8570 Phillips Hwy, Suite 108 Jacksonville, FL 32256 (904) 732-4877 1(800)3907545 Fax: (904) 732-4879 Holly.Davis@nextel.com Cell: (904) 591-6982
	BellSouth Mobility 8171 Baymeadows Way West, Ste 20 Jacksonville, FL 32256 Marilkyn Monroe Buffington Voice/fax: (904) 210-0059 Cell: (904) 868-0309
VHF-FM portable radios Mobile Command Post (Staged at Gulf Strike Team, Mobile, AL)	National Strike Force
Communications Trailor (40 Foot) Communications Vans (2 @ 20 Foot)	Navy SUPSALV resources can be requested via Region IV RRT. (Navy communications resources staged at Williamsburg, VA)

5400 Places of Refuge

[Reserved for future Area Planning Committee development].

Info from International Maritime Organization (IMO) webpage at <http://www.imo.org/home.asp>

In November 2003, the IMO Assembly adopted two resolutions addressing the issue of places of refuge for ships in distress - an important step in assisting those involved in incidents that may lead to the need for a place of refuge to make the right decisions at the right time.

Resolution [A.949\(23\) Guidelines on places of refuge for ships in need of assistance](#) are intended for use when a ship is in need of assistance but the safety of life is not involved. Where the safety of life is involved, the provisions of the SAR Convention should continue to be followed.

The guidelines recognize that, when a ship has suffered an incident, the best way of preventing damage or pollution from its progressive deterioration is to transfer its cargo and bunkers, and to repair the casualty. Such an operation is best carried out in a place of refuge. However, to bring such a ship into a place of refuge near a coast may endanger the coastal State, both economically and from the environmental point of view, and local authorities and populations may strongly object to the operation.

VERSION DATE	V_1.6 23AUG05	CLASSIFICATION: UNCLASSIFIED	CONTROLLING AUTHORITY	AREA PLANNING COMMITTEE	ISSUING AUTHORITY	CAPT D.L. LERSCH	PAGE	5000-22
-----------------	------------------	---------------------------------	--------------------------	----------------------------	----------------------	---------------------	------	---------

Therefore, granting access to a place of refuge could involve a political decision which can only be taken on a case-by-case basis. In so doing, consideration would need to be given to balancing the interests of the affected ship with those of the environment.

A second resolution, [A.950\(23\) *Maritime Assistance Services \(MAS\)*](#), recommends that all coastal States should establish a maritime assistance service (MAS). The principal purposes would be to receive the various reports, consultations and notifications required in a number of IMO instruments; monitoring a ship's situation if such a report indicates that an incident may give rise to a situation whereby the ship may be in need of assistance; serving as the point of contact if the ship's situation is not a distress situation but nevertheless requires exchanges of information between the ship and the coastal State, and for serving as the point of contact between those involved in a marine salvage operation undertaken by private facilities if the coastal State considers that it should monitor all phases of the operation.

5500 Reserved

[Reserved for future Area Planning Committee Development]

5600 Reserved

[Reserved for future Area Planning Committee Development]

5700 Reserved

[Reserved for future Area Planning Committee Development]

5800 Reserved

[Reserved for future Area Planning Committee Development]

5900 Reserved for Area/District

VERSION DATE	V_1.6 23AUG05	CLASSIFICATION: UNCLASSIFIED	CONTROLLING AUTHORITY	AREA PLANNING COMMITTEE	ISSUING AUTHORITY	CAPT D.L. LERSCH	PAGE	5000-23
-----------------	------------------	---------------------------------	--------------------------	----------------------------	----------------------	---------------------	------	---------