


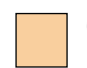




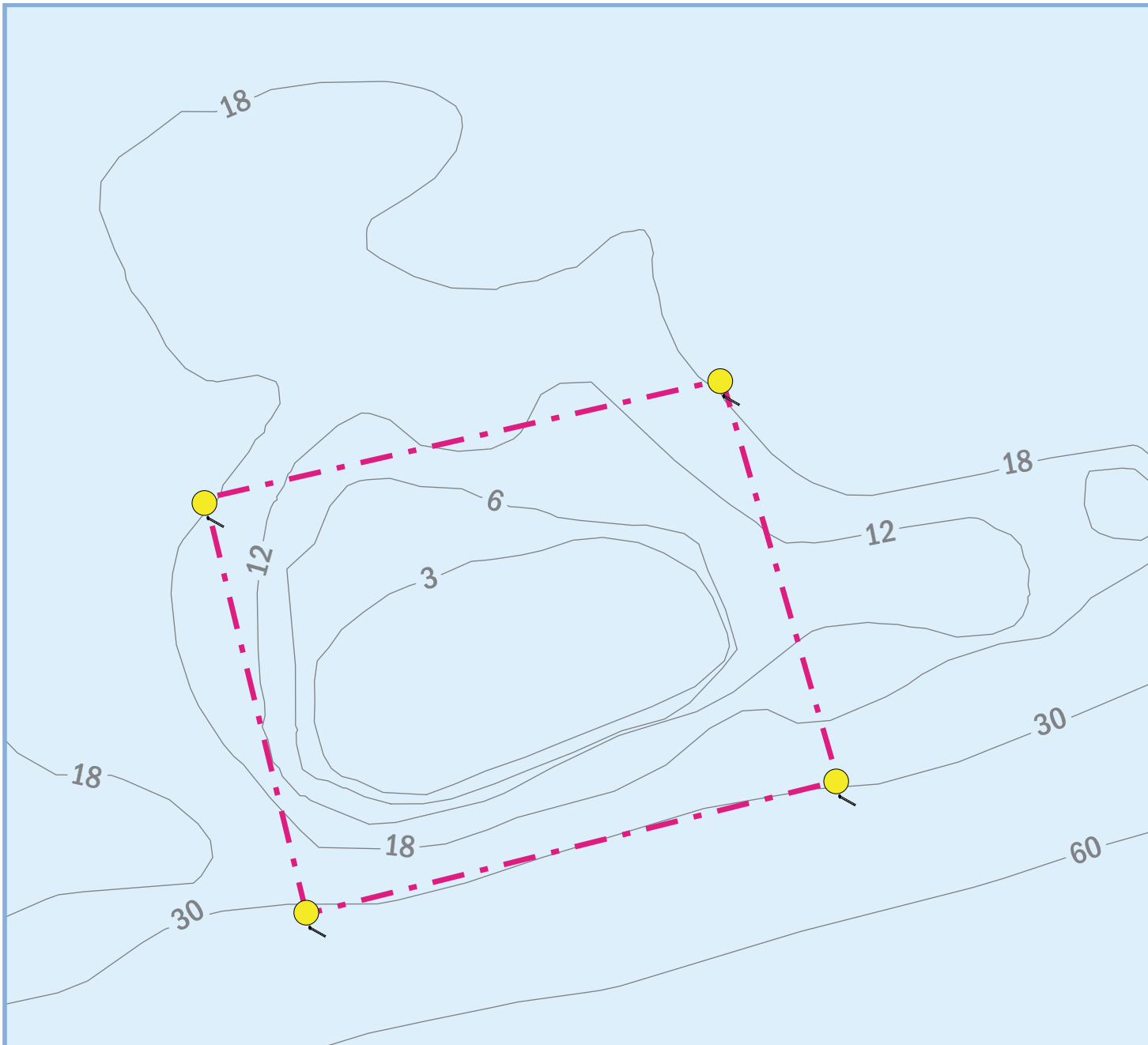
Eastern Sambo

Research Only Area

SANCTUARY AREAS

-  Research Only
-  Ecological Reserve
-  Existing Management Area
-  Sanctuary Preservation Area (SPAs)
-  Wildlife Management Area

-  Shallow Rubble
-  Sea Grass
-  Shallow
-  Coral
-  Very Shallow
-  Island



A Boating and Angling Guide to the



Florida Keys

Eastern Sambo Research Only Area

With certain exceptions, the following activities are prohibited Sanctuary-Wide:

- Moving, removing, taking, injuring, touching, breaking, cutting or possessing coral or live rock.
- Discharging or depositing treated or untreated sewage from marine sanitation devices, trash and other materials
- Dredging, drilling, prop dredging or otherwise altering the seabed, or placing or abandoning any structure on the seabed.
- Operating a vessel in such a manner as to strike or otherwise injure coral, seagrass, or other immobile organisms attached to the seabed, or cause prop scarring.
- Having a vessel anchored on living coral in water less than 40 feet deep when the bottom can be seen. Anchoring on hardbottom is allowed.
- Except in officially marked channels, operating a vessel at more than 4 knots/no wake within 100 yards of residential shorelines, stationary vessels, or navigational aids marking reefs.
- Operating a vessel at more than 4 knots/no wake within 100 yards of a "divers down" flag.
- Diving or snorkeling without a dive flag.
- Operating a vessel in such a manner which endangers life, limb, marine resources, or property.
- Releasing exotic species.
- Damaging or removing markers, mooring buoys, scientific equipment, boundary buoys, and trap buoys.
- Moving, removing, injuring, or possessing historical resources.
- Taking or possessing protected wildlife.
- Using or possessing explosives or electrical charges.
- Harvesting, possessing or landing any marine life species except as allowed by the Florida Fish and Wildlife Conservation Commission Rule (68B-42 F.A.C.).

With certain exceptions, the following activities are prohibited in the Eastern Sambo Research Only Area

- No entry or activities without a FKNMS permit.
- Discharging any matter except cooling water or engine exhaust.
- Fishing by any means; removing, harvesting, or possessing any marine life.
- Touching or standing on living or dead coral.
- Anchoring on living or dead coral, or any attached organism.

Florida Fish and Wildlife Conservation Commission
Fish and Wildlife Research Institute
100 8th Avenue SE
St. Petersburg, Florida 33701
(727) 896-8626
<http://research.MyFWC.com>

Mote Marine Laboratory -
Tropical Research Laboratory
24244 Overseas Highway
Summerland Key, Florida 33042
305-745-2729
<http://isurus.mote.org/Keys>



This project was funded in part by a grant awarded from Mote Marine Laboratory's Protect Our Reefs Grants Program, which is funded by proceeds from the sale of the Protect Our Reefs specialty license plate. Learn more at www.mote.org/4reef.