

# Looe Key

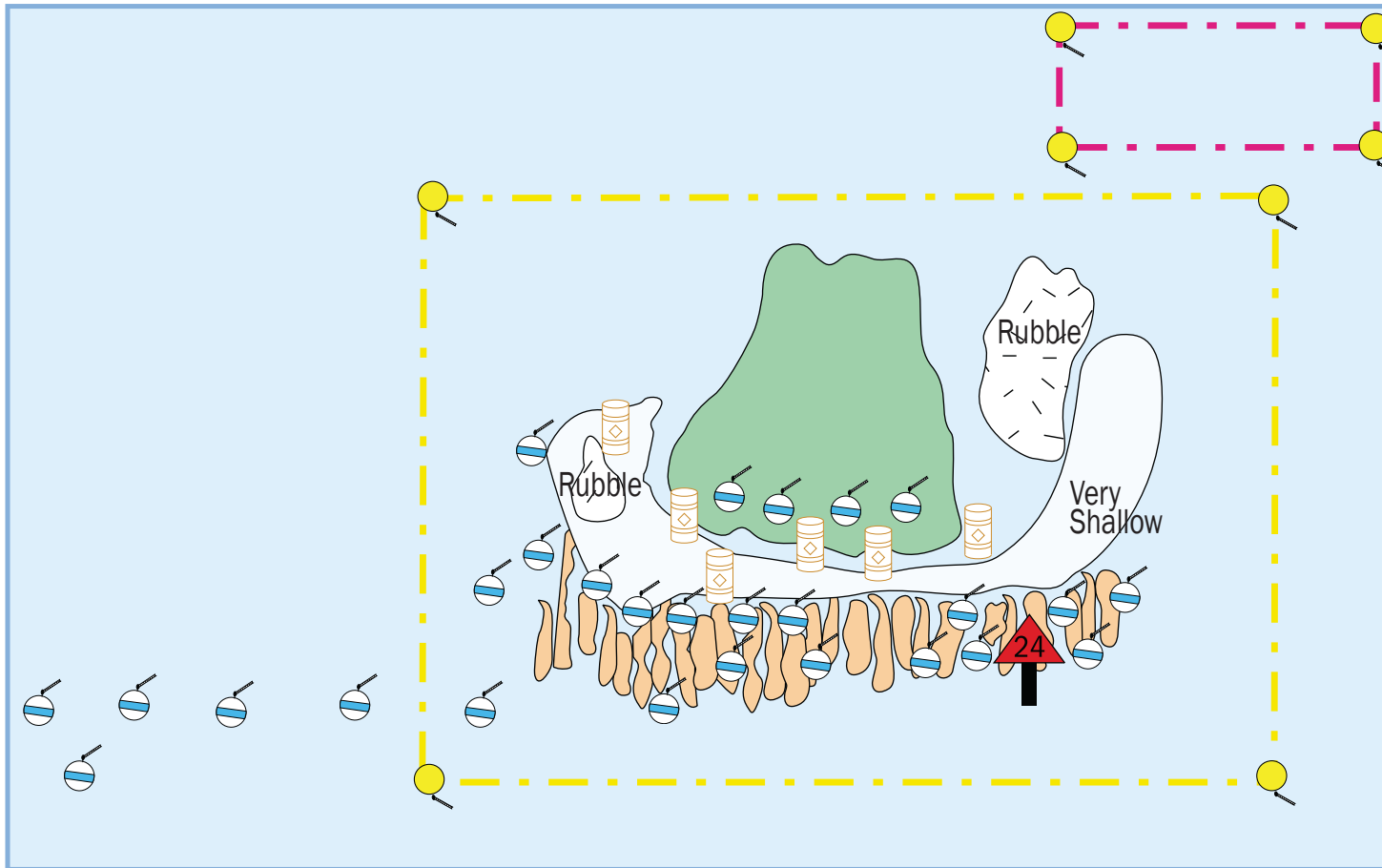
Research Only

Existing Management Area

Sanctuary Preservation Area

## SANCTUARY AREAS

- Research Only
- Ecological Reserve
- Existing Management Area
- Sanctuary Preservation Area (SPAs)
- Wildlife Management Area
- Shallow Rubble
- Sea Grass
- Shallow
- Coral
- Very Shallow
- Island
- 18" Mooring Buoy
- 3 - 5ft. Spar Buoy
- 30" Yellow Sanctuary Buoy



## A Boating and Angling Guide to the



# Florida Keys

## Looe Key Sanctuary Preservation Area/ Looe Key Research Only/ Looe Key Existing Management Area

### With certain exceptions, the following activities are prohibited Sanctuary-Wide:

- Moving, removing, taking, injuring, touching, breaking, cutting or possessing coral or live rock.
- Discharging or depositing treated or untreated sewage from marine sanitation devices, trash and other materials
- Dredging, drilling, prop dredging or otherwise altering the seabed, or placing or abandoning any structure on the seabed.
- Operating a vessel in such a manner as to strike or otherwise injure coral, seagrass, or other immobile organisms attached to the seabed, or cause prop scarring.
- Having a vessel anchored on living coral in water less than 40 feet deep when the bottom can be seen. Anchoring on hardbottom is allowed.
- Except in officially marked channels, operating a vessel at more than 4 knots/no wake within 100 yards of residential shorelines, stationary vessels, or navigational aids marking reefs.
- Operating a vessel at more than 4 knots/no wake within 100 yards of a "divers down" flag.
- Diving or snorkeling without a dive flag.
- Operating a vessel in such a manner which endangers life, limb, marine resources, or property.
- Releasing exotic species.
- Damaging or removing markers, mooring buoys, scientific equipment, boundary buoys, and trap buoys.
- Moving, removing, injuring, or possessing historical resources.
- Taking or possessing protected wildlife.
- Using or possessing explosives or electrical charges.
- Harvesting, possessing or landing any marine life species except as allowed by the Florida Fish and Wildlife Conservation Commission Rule (68B-42 F.A.C.).

### With certain exceptions, the following activities are prohibited in the Looe Key Sanctuary Preservation Area:

- Discharging any matter except cooling water or engine exhaust.
- Fishing by any means; removing, harvesting, or possessing any marine life.
- Touching or standing on living or dead coral.
- Anchoring on living or dead coral, or any attached organism.
- Anchoring when a mooring buoy is available.
- Bait fishing is allowed in SPAs by FKNMS permit.

### With certain exceptions, the following activities are prohibited in the Looe Key Research Only

- No entry or activities without a FKNMS permit.
- Discharging any matter except cooling water or engine exhaust.
- Fishing by any means; removing, harvesting, or possessing any marine life.
- Touching or standing on living or dead coral.
- Anchoring on living or dead coral, or any attached organism.

### The following activities are prohibited in Looe Key Existing Management Area

- Removing, taking, spearing, or otherwise damaging any coral, marine invertebrate, plant, soil, rock, or other material. However, commercial taking of spiny lobster and stone crab by trap and recreational taking of spiny lobster by hand or hand gear consistent with applicable State and Federal fishery regulations are allowed.
- Spearfishing.
- Possession of spearfishing equipment, except while passing through without interruption.

Florida Fish and Wildlife Conservation Commission  
Fish and Wildlife Research Institute  
100 8th Avenue SE  
St. Petersburg, Florida 33701  
(727) 896-8626  
<http://research.MyFWC.com>

Mote Marine Laboratory -  
Tropical Research Laboratory  
24244 Overseas Highway  
Summerland Key, Florida 33042  
305-745-2729  
<http://isurus.mote.org/Keys>



This project was funded in part by a grant awarded from Mote Marine Laboratory's Protect Our Reefs Grants Program, which is funded by proceeds from the sale of the Protect Our Reefs specialty license plate. Learn more at [www.mote.org/4reef](http://www.mote.org/4reef).