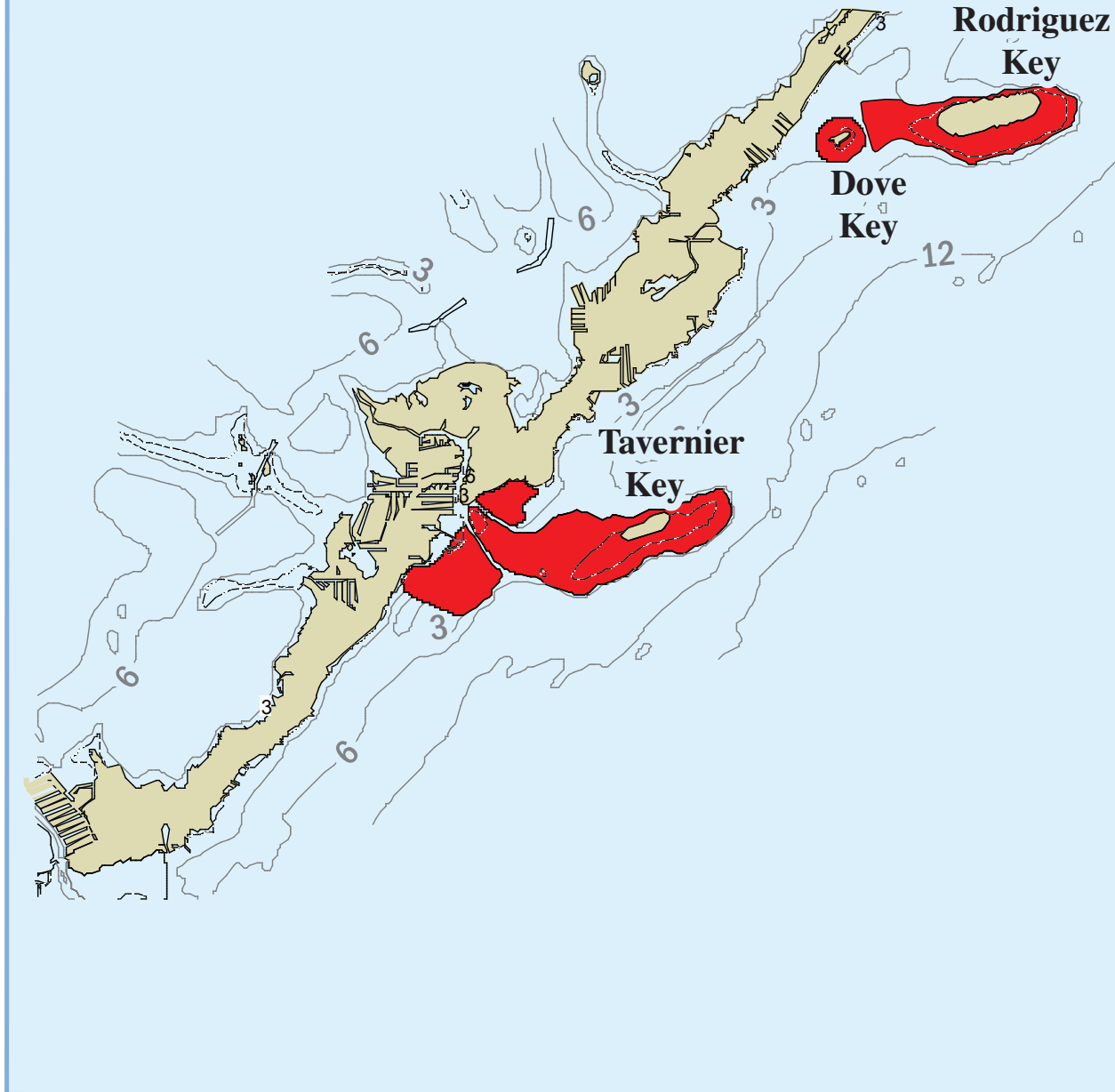


# Rodriguez Key, Dove Key, Tavernier Key

## Wildlife Management Area



 Island

 Marine Zone\*

 Depth Contour (feet)

 Areas Exposed at  
Mean Lower Low Water

\* - See Page 2 for detailed zone descriptions



## Rodriguez Key, Dove Key, Tavernier Key Wildlife Management Areas

**With certain exceptions, the following activities are prohibited Sanctuary-Wide:**

- Moving, removing, taking, injuring, touching, breaking, cutting or possessing coral or live rock.
- Discharging or depositing treated or untreated sewage from marine sanitation devices, trash and other materials
- Dredging, drilling, prop dredging or otherwise altering the seabed, or placing or abandoning any structure on the seabed.
- Operating a vessel in such a manner as to strike or otherwise injure coral, seagrass, or other immobile organisms attached to the seabed, or cause prop scarring.
- Having a vessel anchored on living coral in water less than 40 feet deep when the bottom can be seen. Anchoring on hardbottom is allowed.
- Except in officially marked channels, operating a vessel at more than 4 knots/no wake within 100 yards of residential shorelines, stationary vessels, or navigational aids marking reefs.
- Operating a vessel at more than 4 knots/no wake within 100 yards of a "divers down" flag.
- Diving or snorkeling without a dive flag.
- Operating a vessel in such a manner which endangers life, limb, marine resources, or property.
- Releasing exotic species.
- Damaging or removing markers, mooring buoys, scientific equipment, boundary buoys, and trap buoys.
- Moving, removing, injuring, or possessing historical resources.
- Taking or possessing protected wildlife.
- Using or possessing explosives or electrical charges.
- Harvesting, possessing or landing any marine life species except as allowed by the Florida Fish and Wildlife Conservation Commission Rule (68B-42 F.A.C.).

**The following activities are prohibited in  
Great White Heron and Key West National Wildlife Refuges:**

- Use of personal water crafts, hovercrafts and airboats
- Landing of airplanes, helicopters or ultra-lights
- Water skiing
- Pets on refuge islands
- Search for or removal of antiquities
- Overnight camping on refuge islands
- Open fires on refuge islands
- Cutting, damaging or removal of vegetation

**The following regulations are in place for  
Snipe Keys Wildlife Management Areas:**

- A No Motor zone exists on the tidal flats around each key.
- A closed area exists around the two small islands of Dove Key.

