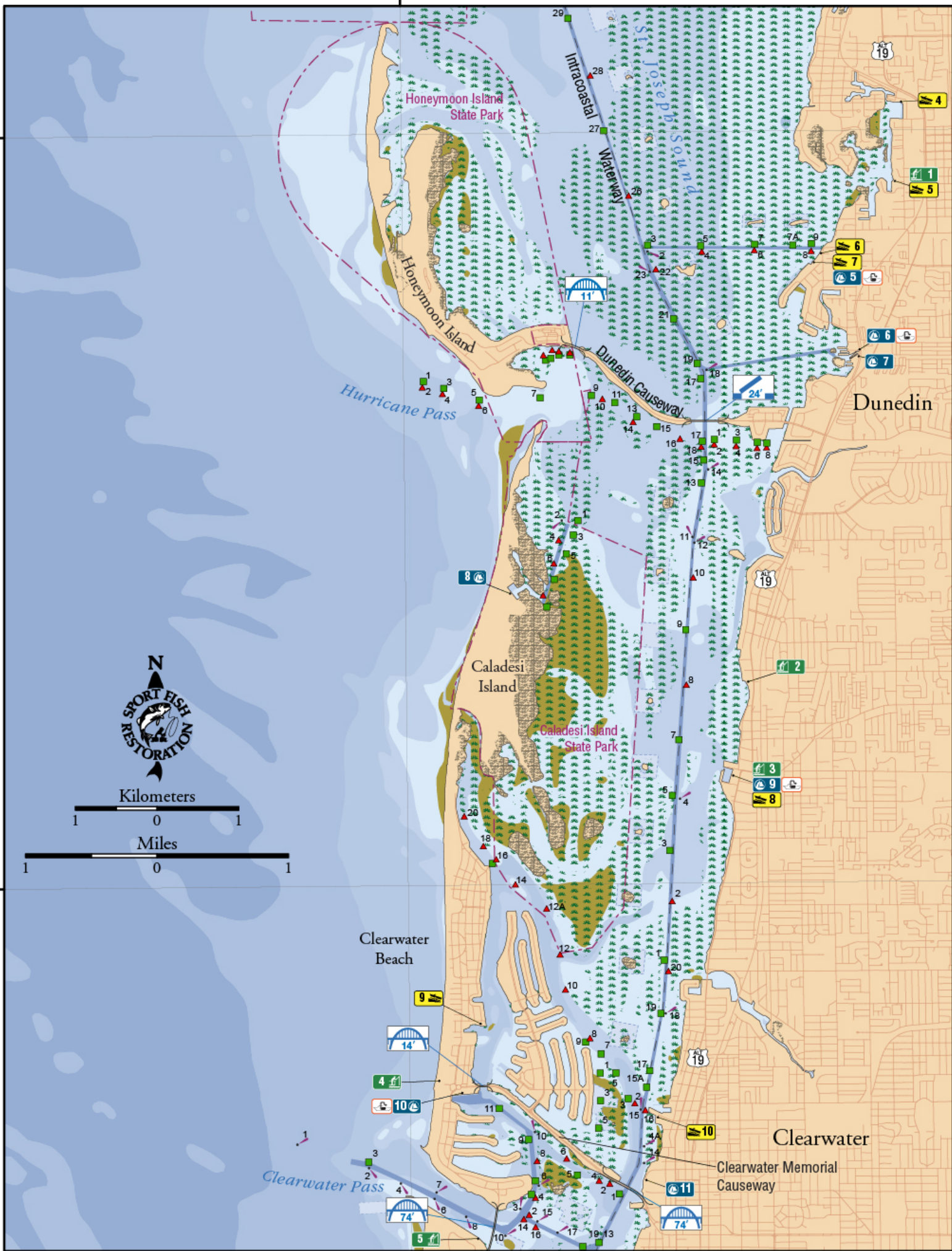


82°50'0"W

28°5'0"N

28°5'0"N



Kilometers

1 0 1

Miles

1 0 1

28°0'0"N

28°0'0"N

82°50'0"W

A Boating and Angling Guide to



Tampa Bay

Honeymoon and Caladesi Islands, St. Joseph Sound, and Surrounding Waters

Fishing Piers

No	FACILITY	ADDRESS	CITY
1	H.S. "Pop" Stansell Memorial Park	797 Florida Ave.	Palm Harbor
2	Dunedin Marina/Pier	51 Main St.	Dunedin
3	Big Pier 60	1 Causeway Blvd.	Clearwater Beach

Clean Marinas

No	FACILITY	ADDRESS	CITY	PHONE
5	Marino's Marina	297 Bayshore Dr.	Palm Harbor	727-784-0143
6	Homeport Marina	605 Orange St.	Palm harbor	727-784-1443
7	Caladesi Island State Park	No. 3 Causeway Blvd.	Dunedin	727-469-5918
8	Dunedin Municipal Marina	51 Main St.	Dunedin	727-298-3030
9	City of Clearwater Municipal Marina	25 State Hwy 60	Clearwater	727-462-6954

Boat Ramps

No	FACILITY	ADDRESS	CITY	Ramps/Lanes	Paved Ramp	Ramp Fee	Docks	Restroom
4	Sutherland Bayou	2119 Alt. US-19 N.	Palm Harbor	1/1	Y	Y	Y	Y
5	H.S. "Pop" Stansell Memorial Park	797 Florida Ave.	Palm Harbor	2/3	N	N	Y	Y
6	Speckled Trout Marina	369 Bayshore Dr.	Ozona	1/1	Y	Y	Y	Y
7	Marino's Marina	297 Bayshore Dr.	Ozona	1/1	Y	Y	Y	Y
8	Dunedin Marina and Edgewater Park	51 Main St.	Dunedin	1/1	Y	Y	Y	Y
9	Clearwater Beach Recreation Center	69 Bay Esplanade	Clearwater Beach	1/1	Y	N	Y	Y
10	Seminole Docks	201 Seminole St.	Clearwater	4/8	Y	N	Y	Y

Legend

Seagrass

Mangroves

MANAGED AREAS

State Park

Marinas

Pumpout Facility

Boat Ramps

Fishing Piers

Navigation Markers

Intracoastal Waterway (ICW)

WATER DEPTH

0 to 3 feet
 3 to 6 feet
 6 to 12 feet
 12 to 18 feet
 Greater than 18 feet

Dredged Channel

Spoil Area

Exposed at Mean Lower Low Water

Bridges

Fixed Bridge (Vertical Clearance)

Bascule Bridge (Vertical Clearance When Closed)

Florida Fish and Wildlife Conservation Commission
 Fish and Wildlife Research Institute
 100 8th Avenue SE
 St. Petersburg, Florida 33701
 (727) 896-8626
<http://MyFWC.com/BoatingGuides>

Tampa Bay Estuary Program
 100 Eighth Avenue SE
 St. Petersburg, Florida 33701
 727-893-2765
<http://www.tbep.org>



Funding for this project was obtained through Tampa Bay Estuary Program specialty license plate funds.

This guide is not intended for navigational use. For local navigation, see NOAA Charts 11411, 11415, 11416, and 11425.