

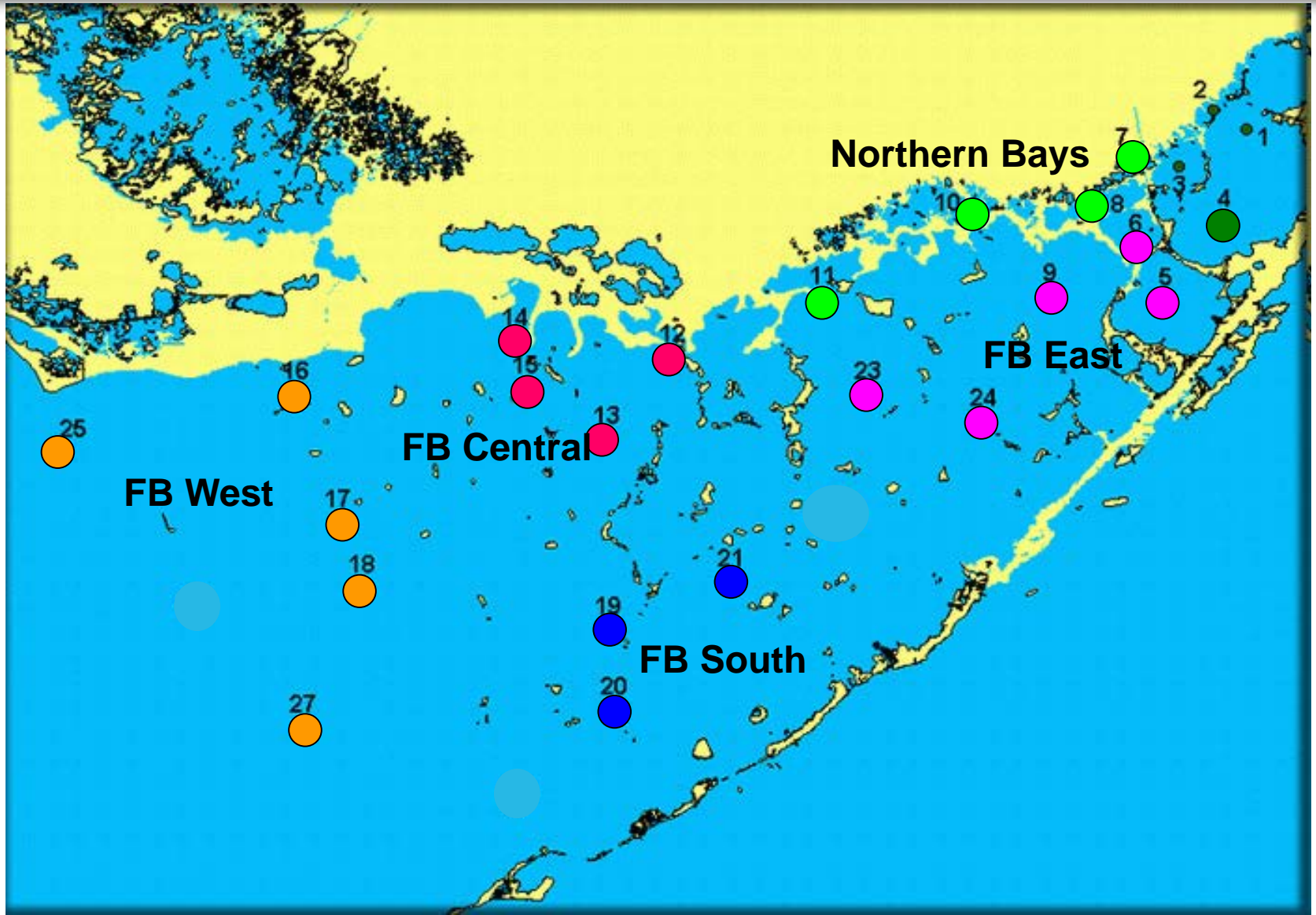
**FKNMS WQPP  
Technical Advisory Committee  
Florida Bay Water Quality Network**

**Rod A. Braun  
Office of Everglades Policy and Coordination  
July 14, 2016**

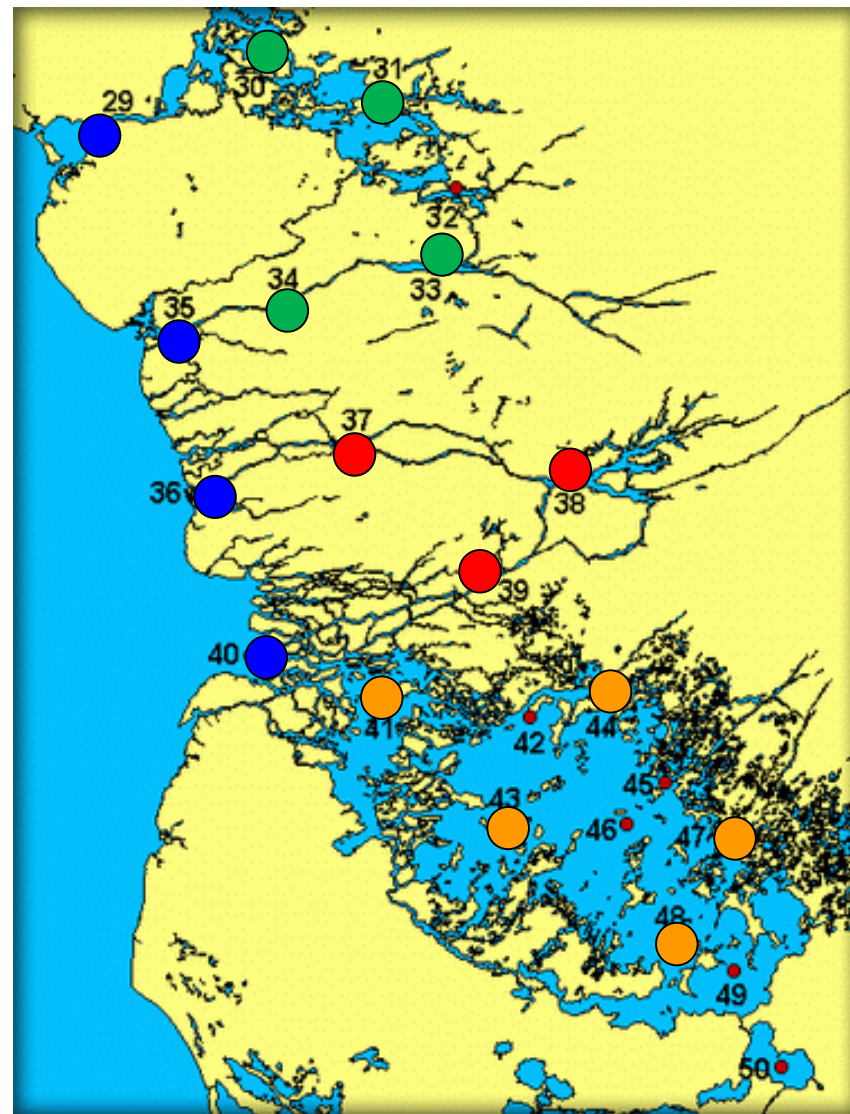
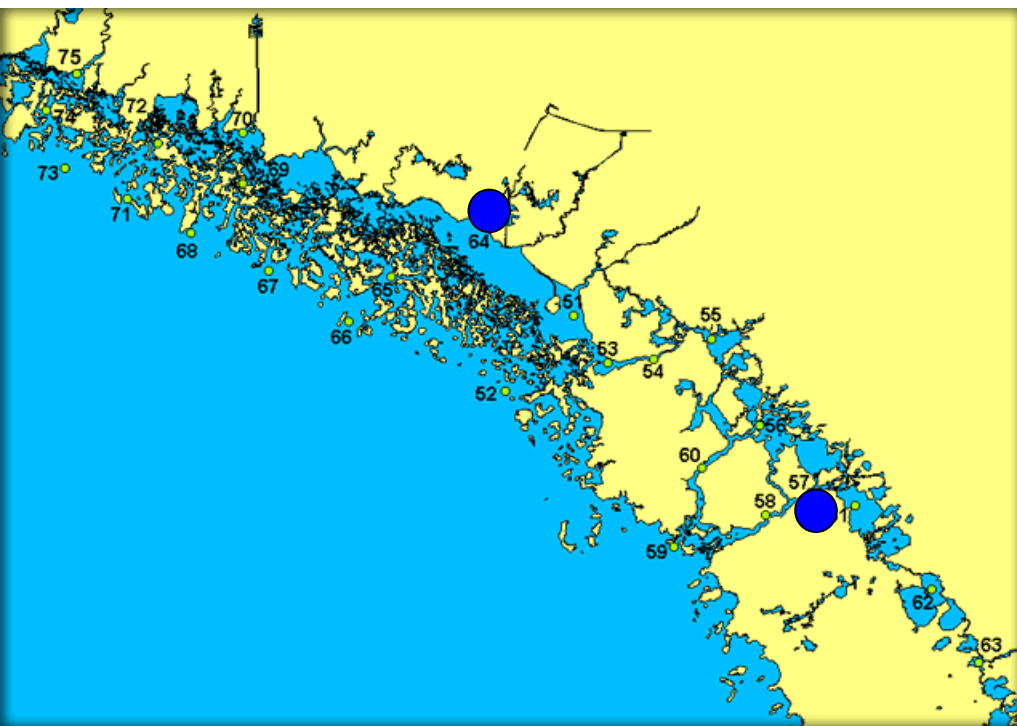
# Florida Bay Water Quality Stations



# Florida Bay Water Quality Stations



# Whitewater Bay sub-regions



- Coastal Transition Zone
- Mangrove Rivers
- Shark River
- Whitewater Bay

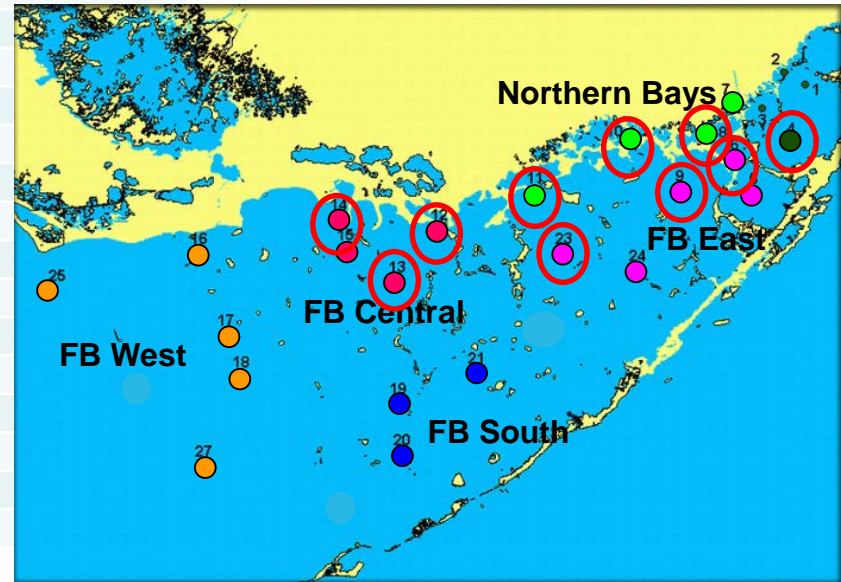
# Parameter List

- Chlorophyll *a*
- NO<sub>x</sub>
- NO<sub>2</sub>
- NH<sub>4</sub>
- TN
- TOC
- TPO<sub>4</sub>
- OPO<sub>4</sub>
- TSS
- Turbidity
- Specific Conductivity
- Temperature
- Turbidity
- pH
- DO
- Secchi



# Period of Record: Florida Bay

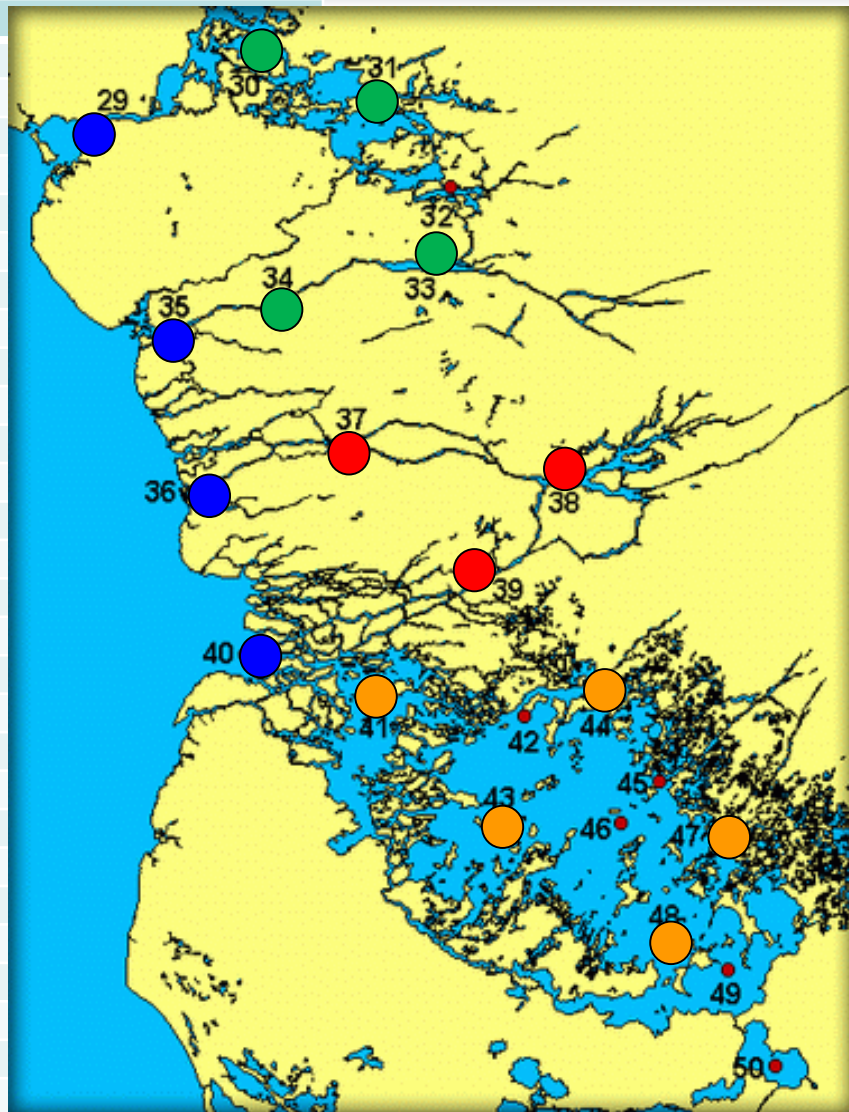
Bi-monthly started 1/2012			
Station	Start Date	End Date	Start Date Monthly
FLAB01	Jun-89	Sep-14	
FLAB02	Jun-89	Sep-14	
FLAB03	Jun-89	Sep-14	
FLAB04	Jun-89	Sep-14	May-16
FLAB05	Jun-89		
FLAB06	Jun-89		May-16
FLAB07	Jun-89		
FLAB08	Jun-89		May-16
FLAB09	Jun-89		May-16
FLAB10	Jun-89		May-16
FLAB11	Jun-89		May-16
FLAB12	Jun-89		May-16
FLAB13	Jun-89		May-16
FLAB14	Apr-91		
FLAB15	Jun-89		May-16
FLAB16	Jun-89		
FLAB17	Jun-89		
FLAB18	Jun-89		
FLAB19	Apr-91		
FLAB20	Jun-89		
FLAB21	Jun-89		
FLAB22	Apr-91	Dec-09	
FLAB23	Apr-91		May-16
FLAB24	Jun-89		
FLAB25	Jul-92		



# Period of Record: Whitewater Bay

Bi-monthly started 1/2012

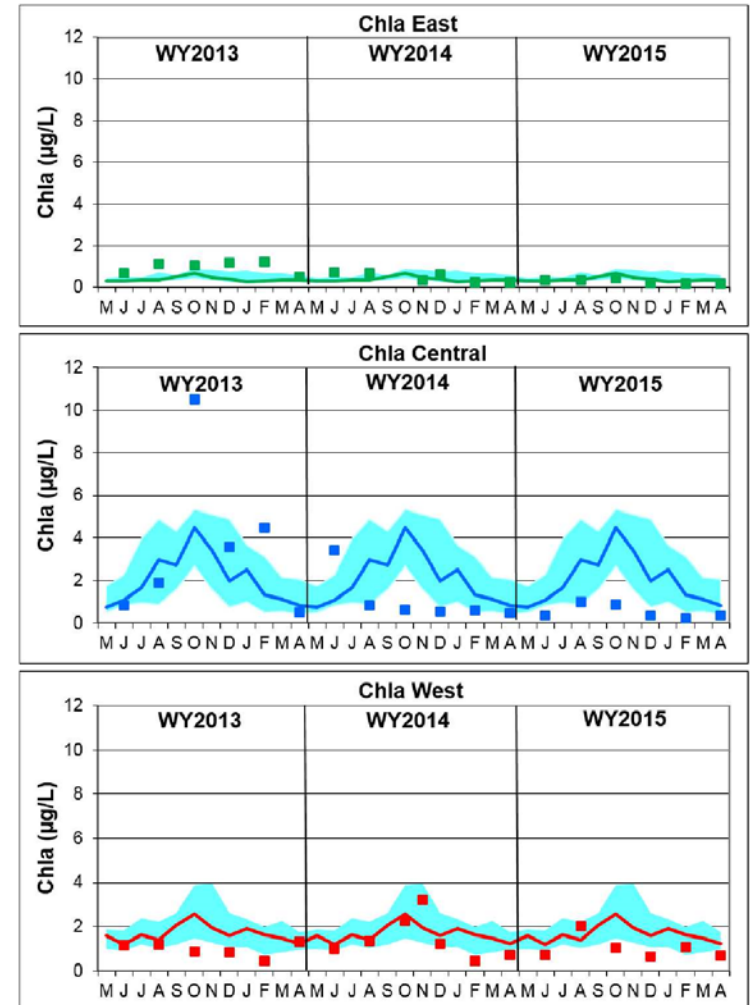
Station	Start Date	End Date
FLAB26	Jul-92	Dec-09
FLAB27	Jul-92	
FLAB28	Jul-92	Dec-09
FLAB29	Sep-92	
FLAB30	Sep-92	
FLAB31	Sep-92	
FLAB32	Sep-92	Dec-09
FLAB33	Sep-92	
FLAB34	Sep-92	
FLAB35	Sep-92	
FLAB36	Sep-92	
FLAB37	Sep-92	
FLAB38	Sep-92	
FLAB39	Sep-92	
FLAB40	Sep-92	
FLAB41	Sep-92	
FLAB42	Sep-92	Dec-09
FLAB43	Sep-92	
FLAB44	Sep-92	
FLAB47	Sep-92	
FLAB48	Sep-92	
FLAB49	Sep-92	Dec-09



# Data Availability

- Data available in the DBHYDRO Database: [www.sfwmd.gov/dbhydro](http://www.sfwmd.gov/dbhydro)
- South Florida Environmental Report (SFER)

## 2016 SFER





# Questions?



Florida Bay Everglades National Park