

27°5'0"W

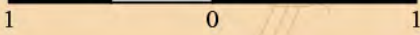
82°0'0"W



Kilometers



Miles



27°0'0"W



Harbor Heights

DE SOTO COUNTY
CHARLOTTE COUNTY

Port Charlotte

Peace River

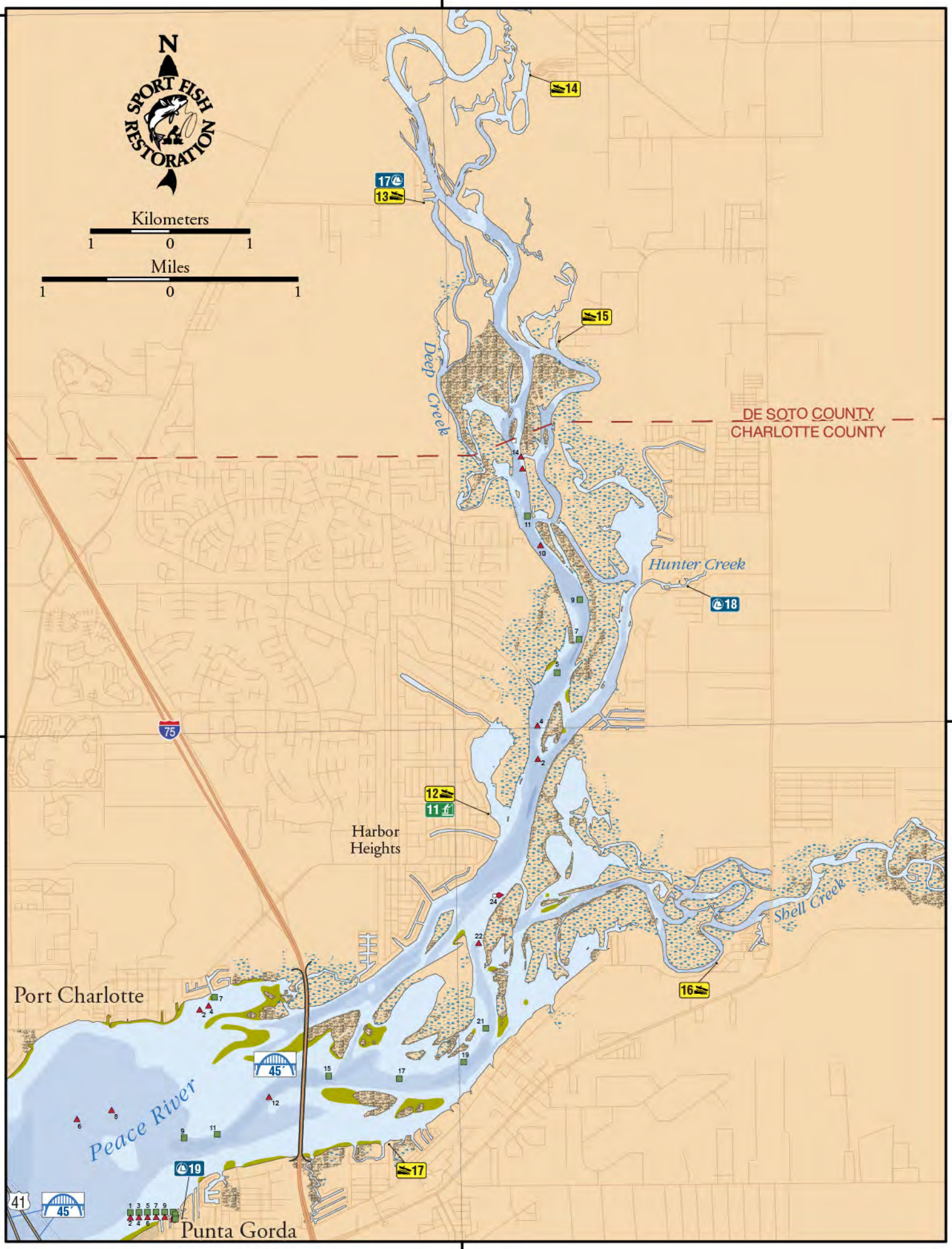
Hunter Creek

Shell Creek

Punta Gorda

82°0'0"W

27°0'0"W



A Boating and Angling Guide to

Charlotte Harbor



Gasparilla Island, Gasparilla Sound, Placida, Boca Grande and Surrounding Waters

Fishing Piers

No	FACILITY	ADDRESS	CITY
11	Harbour Heights Park	2530 Harbour Dr.	Punta Gorda

Clean Marinas

No	FACILITY	ADDRESS	CITY	PHONE
17	DeSoto Marina	9700 SW Riverview Cr.	Arcadia	941-627-3474
18	Peace River Fish Camp	29208 Snook Cr.	Punta Gorda	941-630-2819
19	Punta Gorda Marina	25096 Marion Ave.	Punta Gorda	941-639-2750

Boat Ramps

No	FACILITY	ADDRESS	CITY	Ramps/Lanes	Paved Ramp	Ramp Fee	Docks	Restroom
12	Harbor Heights Park	20054 Edgewater Dr.	Punta Gorda	1/2	Y	N	Y	Y
13	Deep Creek Park	9695 SW Peace River St.	Arcadia	1/1	Y	N	N	N
14	Lettuce Lake Park	201 E Oak St.	Arcadia	1/1	Y	N	N	N
15	Liverpool Park	Off Liverpool Rd.	Arcadia	1/1	Y	N	Y	N
16	Riverside Park	8320 Riverside Dr.	Punta Gorda	1/2	Y	N	N	N
17	Darst Park	537 Darst Ave.	Punta Gorda	1/1	Y	N	Y	N

Legend



Marsh



Mangroves

MANAGED AREAS



State Park



Marinas



Boat Ramps

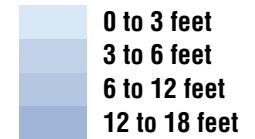


Fishing Piers



Navigation Markers

WATER DEPTH



Spoil Area



Exposed at Mean Lower Low Water



Bridges



Fixed Bridge (Vertical Clearance)

This guide is not intended for navigational use. For local navigation, see NOAA Charts 11424, 11425, and 11426.

