



**Florida Keys  
Aqueduct Authority**



## **CURRENT STATUS OF THE REGIONAL WASTEWATER PROJECT**

09-MAY 2018

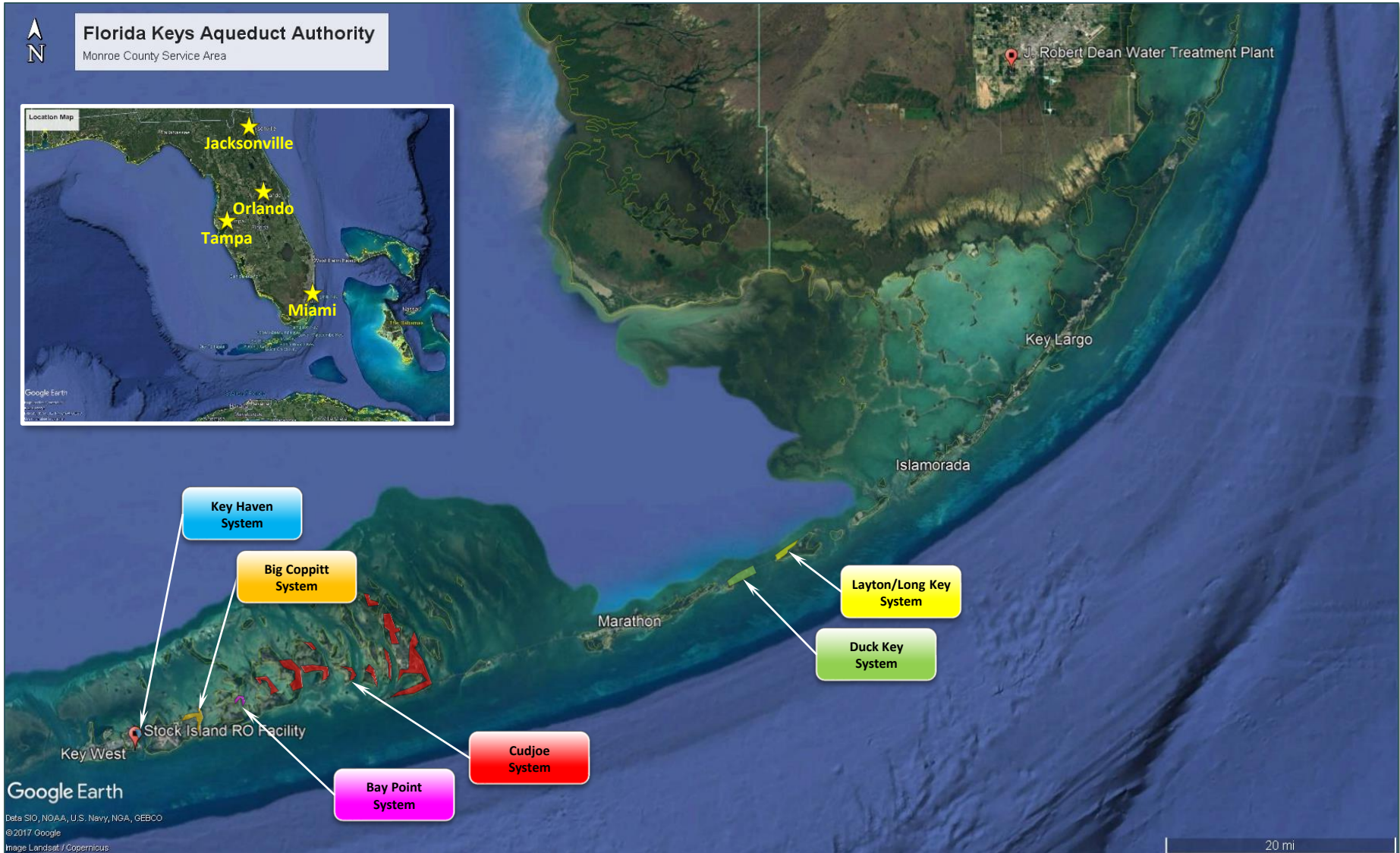


SFWMD Projects and Lands Committee Meeting



# FKAA has six discrete central wastewater systems

2.

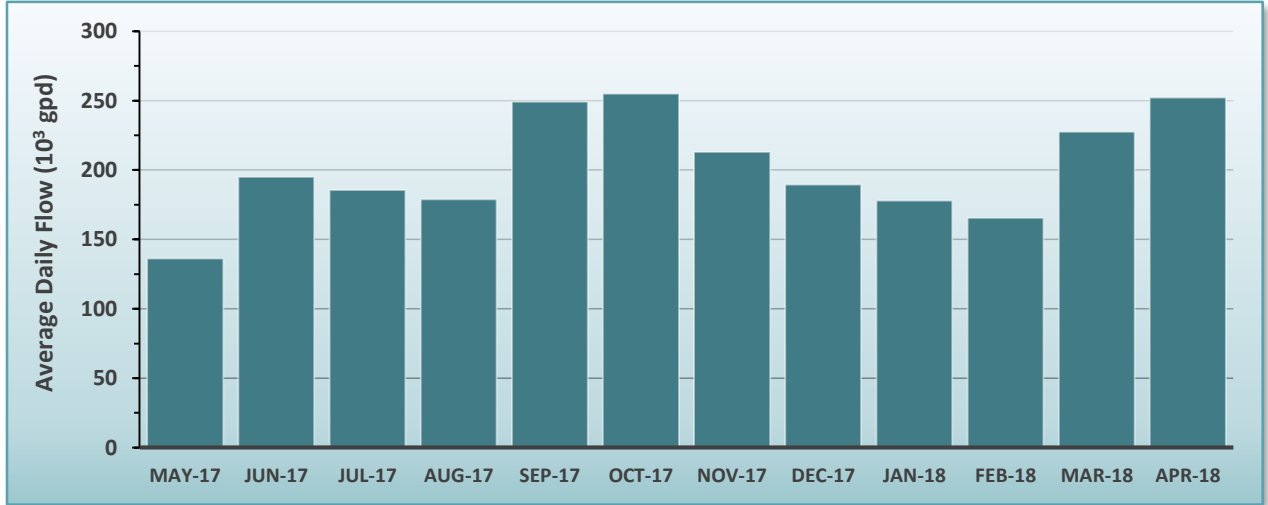


# Key Haven will soon be decommissioned

3.



System	Attributes	Design Capacity (10 <sup>3</sup> gpd)	Discharge Permit Limitations (mg/L)
Key Haven	<ul style="list-style-type: none"> <li>Acquired in 2009</li> <li>450 potential EDUs*</li> <li>Plant to be decommissioned in 2019</li> <li>Three injection wells: 60' casing depth, 90' overall depth (8" Schedule 40 PVC)</li> </ul>	200	<ul style="list-style-type: none"> <li>5 CBOD</li> <li>25 TSS</li> <li>25 TN</li> <li>3.5 TP</li> </ul>

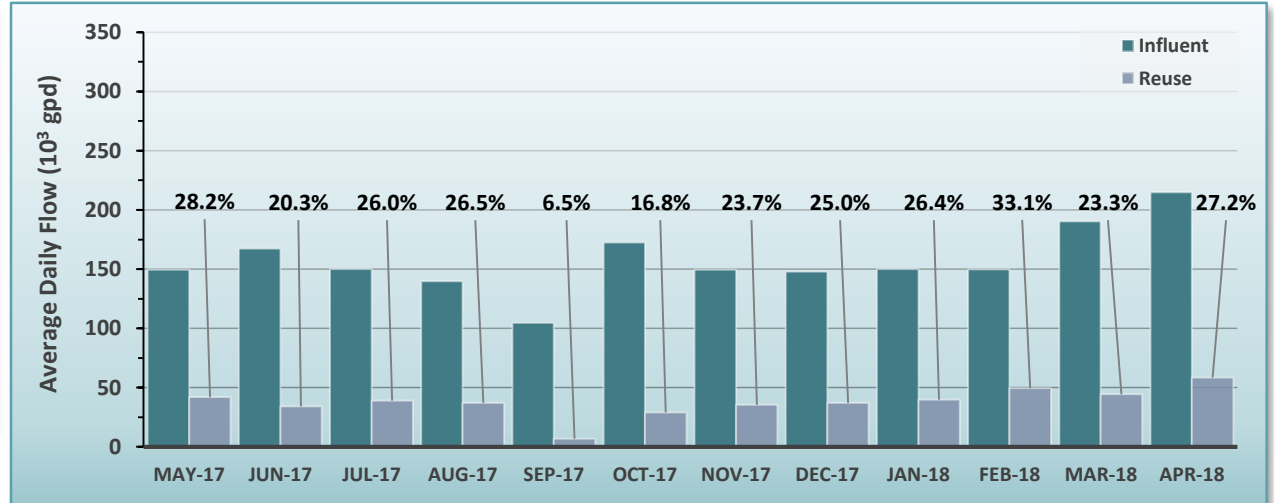
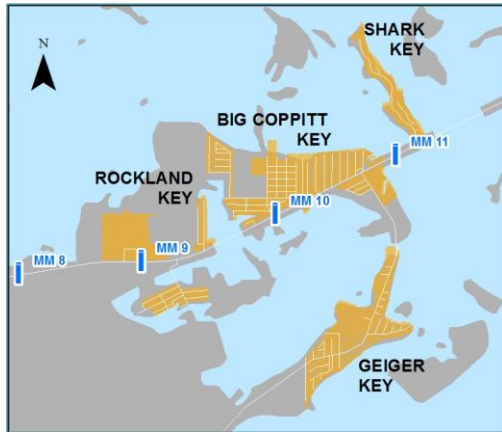
\*EDU = Equivalent Dwelling Unit



# Big Coppitt has an AWT facility, with reuse water and serves the NAS on Boca Chica

4.

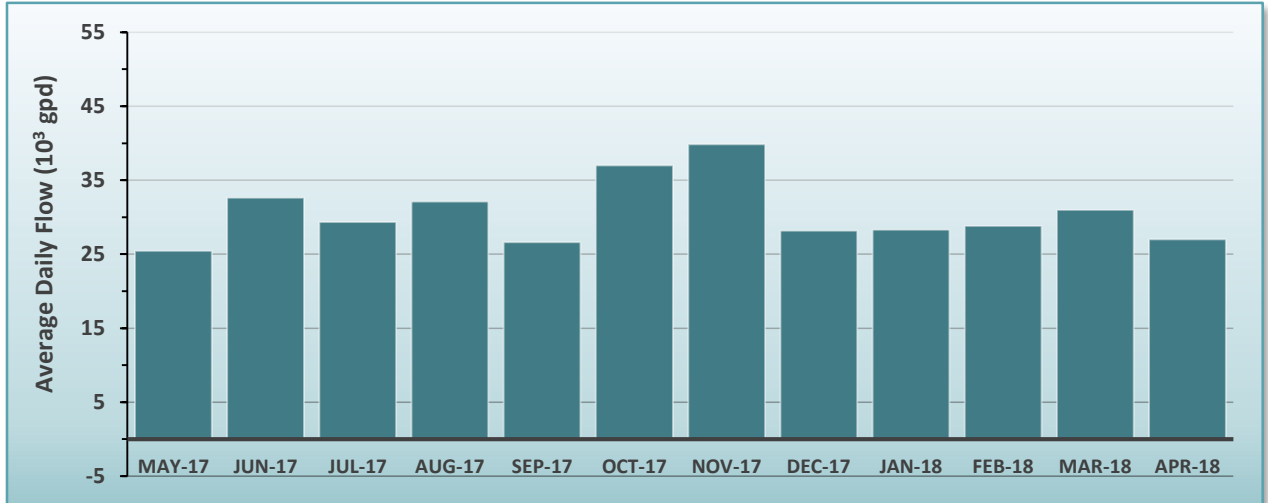
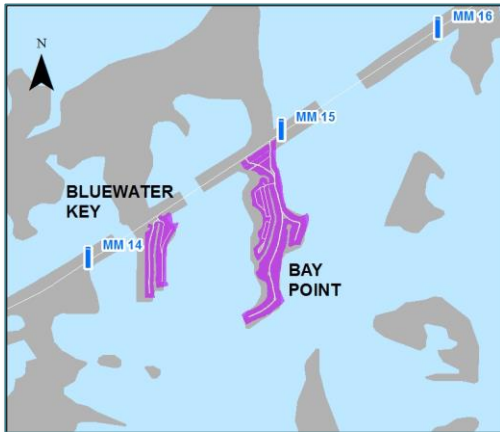
System	Attributes	Design Capacity (10 <sup>3</sup> gpd)	Discharge Permit Limitations (mg/L)
 Big Coppitt	<ul style="list-style-type: none"> <li>• Construction from 2007 to 2009</li> <li>• 1,739 potential EDUs</li> <li>• New AWT facility</li> <li>• Reuse water available</li> <li>▪ Two injection wells: 60' casing depth, 90' overall depth (8" Schedule 40 PVC)</li> </ul>	 323	<ul style="list-style-type: none"> <li>5 CBOD</li> <li>5 TSS</li> <li>3 TN</li> <li>1 TP</li> </ul>



# Bay Point was the first system, designed with BAT and has the only vacuum collection system

5.

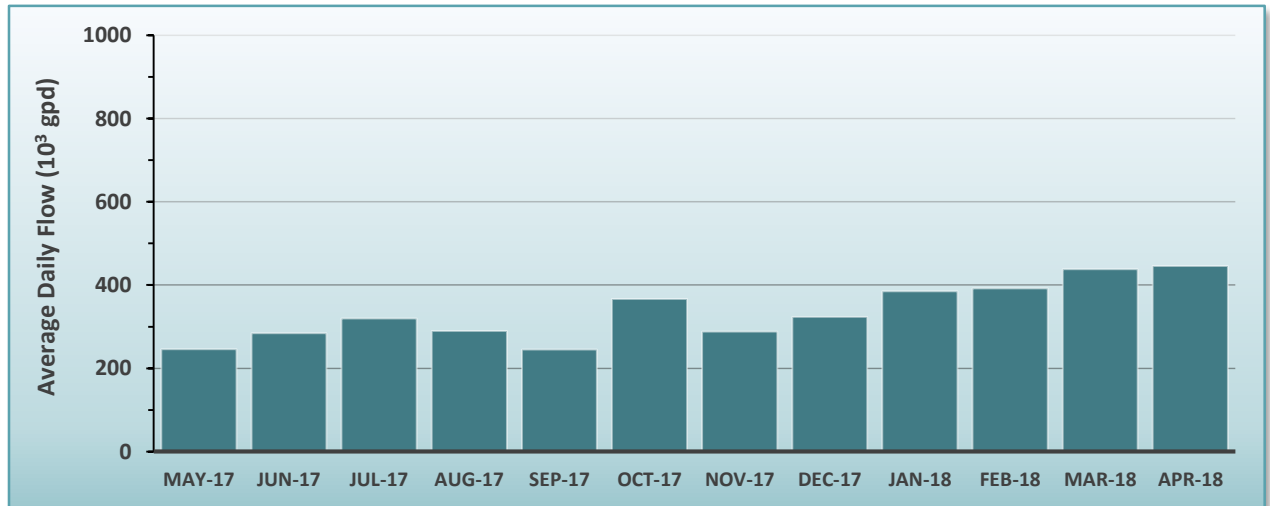
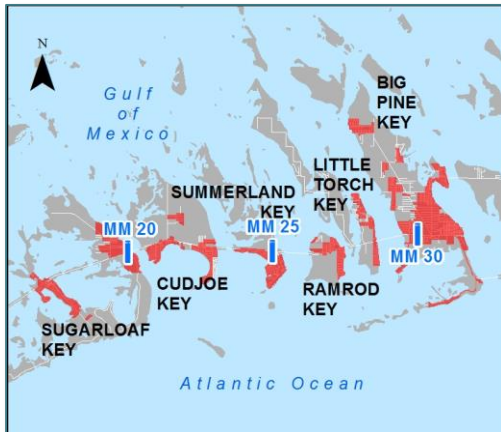
System	Attributes	Design Capacity (10 <sup>3</sup> gpd)	Discharge Permit Limitations (mg/L)
Bay Point	<ul style="list-style-type: none"> <li>Construction from 2004 to 2005</li> <li>438 potential EDUs</li> <li>New BAT treatment facility</li> <li>Two injection wells: 60' casing depth, 90' overall depth (6" Schedule 40 PVC)</li> </ul>	54	<ul style="list-style-type: none"> <li>10 CBOD</li> <li>10 TSS</li> <li>10 TN</li> <li>1 TP</li> </ul>



# Cudjoe Regional is the largest system and is designed with AWT

6.

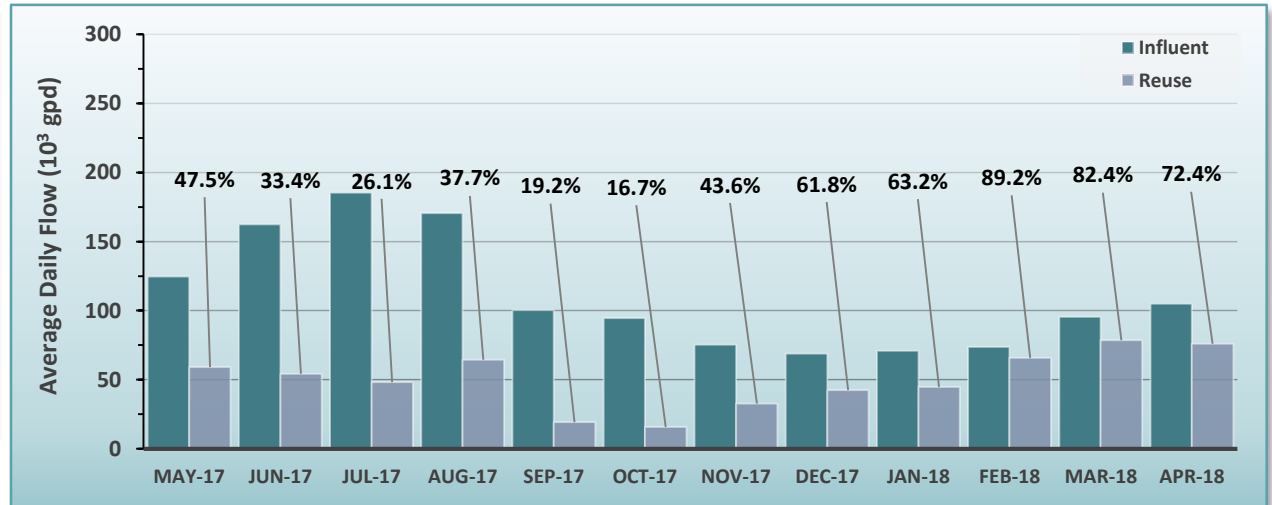
System	Attributes	Design Capacity (10 <sup>3</sup> gpd)	Discharge Permit Limitations (mg/L)
Cudjoe Regional	<ul style="list-style-type: none"> <li>• Construction from 2013 to 2018</li> <li>• 9,038 potential EDUs</li> <li>• New AWT treatment facility</li> <li>• Four shallow injection wells: 80' casing depth, 110' overall depth (10" Schedule 40 PVC)</li> <li>• One deep injection well: 2800' casing depth, 3200' overall depth (44" to 12.75" Steel)</li> </ul>	940	<ul style="list-style-type: none"> <li>5 CBOD</li> <li>5 TSS</li> <li>3 TN</li> <li>1 TP</li> </ul>



# Duck Key has an AWT facility, with reuse water and serves Hawk's Cay Resort, Duck Key and Conch Key

7.

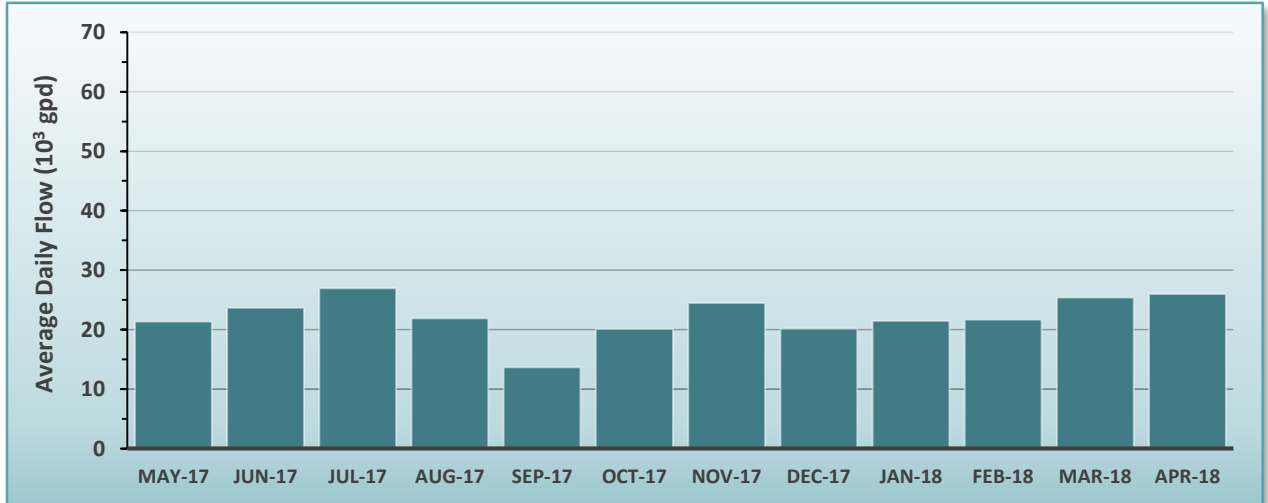
System	Attributes	Design Capacity (10 <sup>3</sup> gpd)	Discharge Permit Limitations (mg/L)
Duck Key	<ul style="list-style-type: none"> <li>Acquired in 2006, redesigned in 2011</li> <li>1,472 potential EDUs</li> <li>New AWT facility</li> <li>Reuse water available</li> <li>Two injection wells: 60' casing depth, 90' overall depth (8" Schedule 40 PVC)</li> </ul>	275	<ul style="list-style-type: none"> <li>5 CBOD</li> <li>5 TSS</li> <li>3 TN</li> <li>1 TP</li> </ul>



# Layton is a small BAT system serving the City of Layton and Long Key

8.

System	Attributes	Design Capacity (10 <sup>3</sup> gpd)	Discharge Permit Limitations (mg/L)
Layton	<ul style="list-style-type: none"> <li>Construction from 2005 to 2006, expanded in 2017</li> <li>444 potential EDUs</li> <li>New BAT treatment facility</li> <li>Two injection wells: 60' casing depth, 90' overall depth (6" Schedule 40 PVC)</li> </ul>	66	<ul style="list-style-type: none"> <li>10 CBOD</li> <li>10 TSS</li> <li>10 TN</li> <li>1 TP</li> </ul>

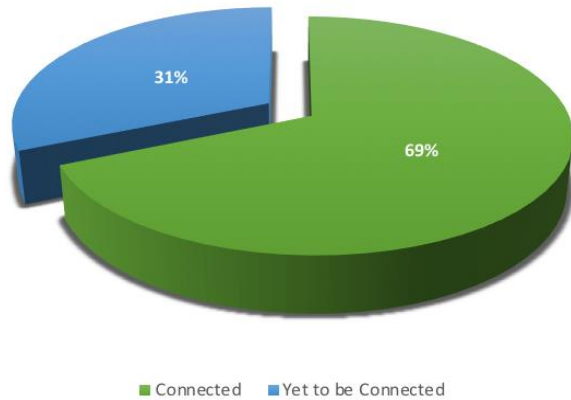




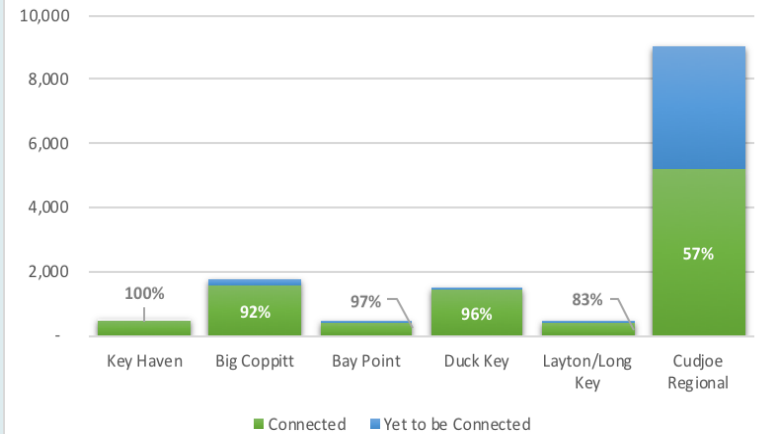
# As of 01-May, 69% of all potential EDU's in the region are connected to the central sewer

9.

### System-Wide Central Sewer Connections



### Central Sewer Connections by Region



# Questions?

10.

