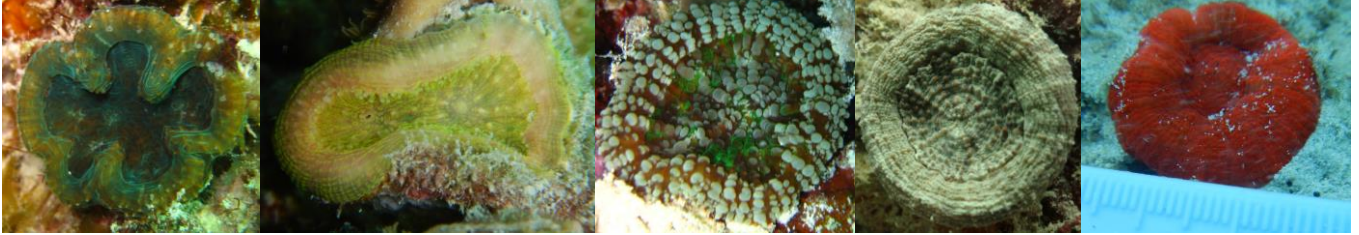


All four transects: tally juveniles (<4 cm) of Mussinae, Faviinae, Meandrinidae, and *M. cavernosa*

Mussinae: *Isophyllia*, *Mussa*, *Mycetophyllia*, *Scolymia*

- Wide ridge along outside; septa with tall, sharp teeth, usually with fleshy bumps on the tops
- At <4 cm, often a single (mostly) round, fleshy polyp with central wheel-spoke design but *Mycetophyllia* colonies can look like flowers as ridges fold inward
- Often fluorescent



Faviinae: *Colpophyllia*, *Diploria*, *Favia*, *Manicina*, *Pseudodiploria* (juveniles look like mini adults)

- Regular, narrow, sharp septa with small, serrated teeth
- Tissue line/flap partway down septa moving from ridge to valley



Meandrinidae: *Dendrogyra*, *Dichocoenia*, *Eusmilia*, *Meandrina*

- Large, thick, not noticeably toothy septa
- Septa of alternating size/height or similar height but varying extension into valleys
- Typically tan, yellowish tan or light brown with tentacles frequently out during the day



***Montastraea cavernosa*:**

- Large, round, exsert polyps which mound upward
- Frequently with tentacles out
- Often fluorescent (typically orange/red)
- Surface tissue can close polyp all the way to mouth

