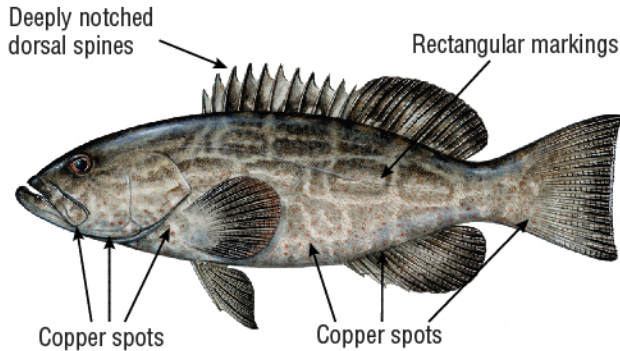


# A Boating and Angling Guide to the

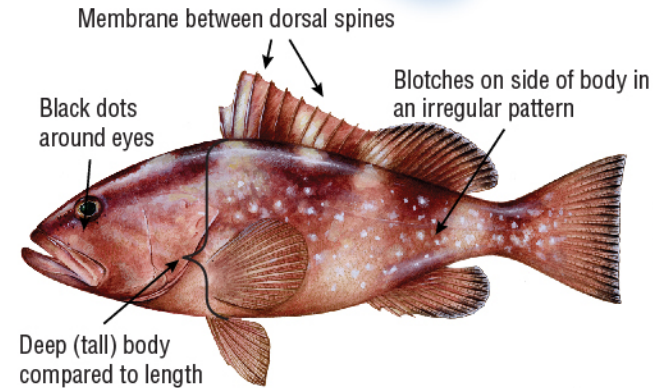
# Florida Keys



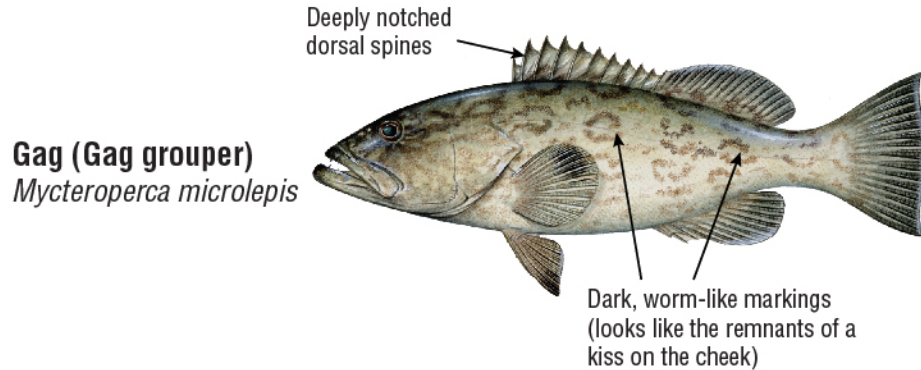
## Know your Florida fish: Groupers



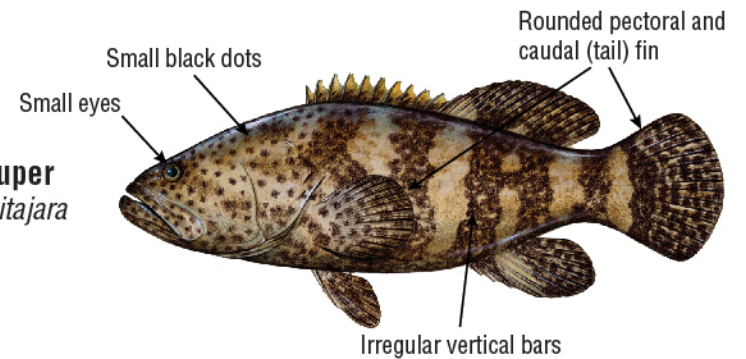
**Black grouper**  
*Mycteroperca bonaci*



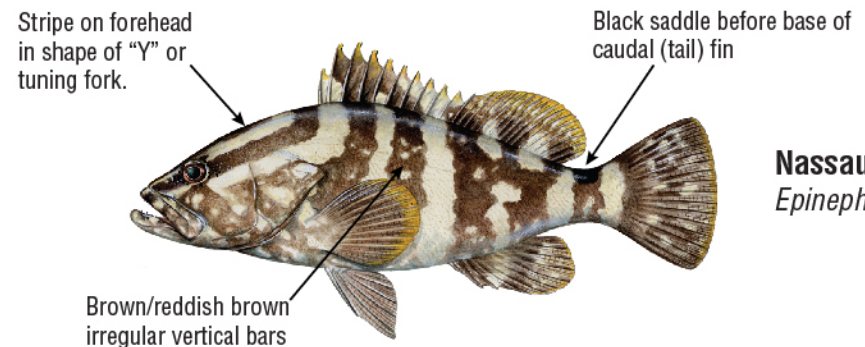
**Red grouper**  
*Epinephelus morio*



**Gag (Gag grouper)**  
*Mycteroperca microlepis*



**Goliath grouper**  
*Epinephelus itajara*



**Nassau grouper**  
*Epinephelus itajara*

Florida Fish and Wildlife Conservation Commission  
Fish and Wildlife Research Institute  
100 8th Avenue SE  
St. Petersburg, Florida 33701  
727-896-8626  
MyFWC.com/BoatingGuides

Mote Marine Laboratory -  
Tropical Research Laboratory  
24244 Overseas Highway  
Summerland Key, Florida 33042  
305-745-2729  
<http://isurus.mote.org/Keys>



This project was funded in part by a grant awarded from Mote Marine Laboratory's Protect Our Reefs Grants Program, which is funded by proceeds from the sale of the Protect Our Reefs specialty license plate. Learn more at [www.mote.org/4reef](http://www.mote.org/4reef).