

East Harbor Key, Lower Harbor Keys

Wildlife Management Area

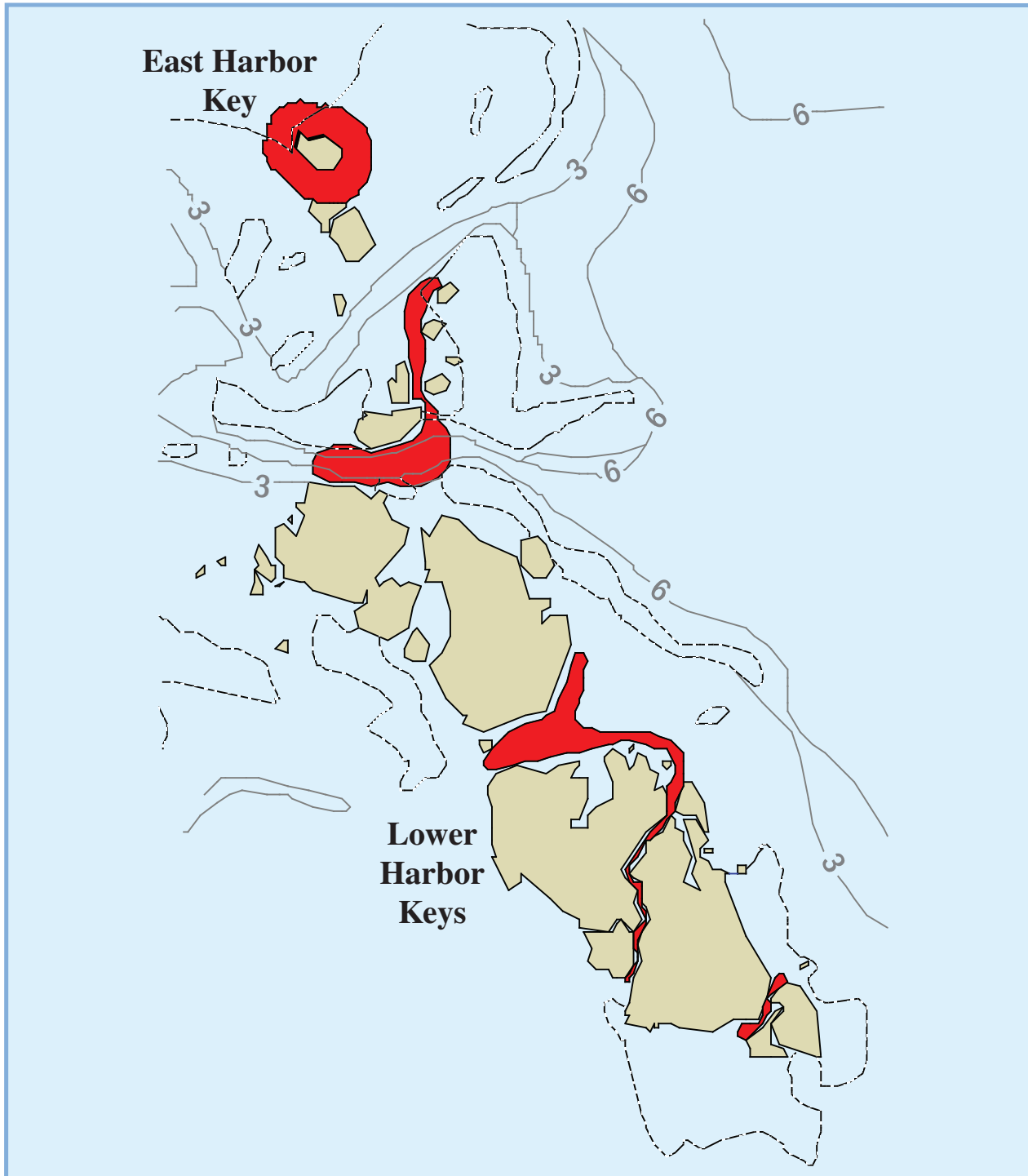
 Island

 Marine Zone*

 Depth Contour (feet)

 Areas Exposed at
Mean Lower Low Water

* - See Page 2 for detailed zone
descriptions



A Boating and Angling Guide to the



Florida Keys

East Harbor Key, Lower Harbor Keys Wildlife Management Areas

With certain exceptions, the following activities are prohibited Sanctuary-Wide:

- Moving, removing, taking, injuring, touching, breaking, cutting or possessing coral or live rock.
- Discharging or depositing treated or untreated sewage from marine sanitation devices, trash and other materials
- Dredging, drilling, prop dredging or otherwise altering the seabed, or placing or abandoning any structure on the seabed.
- Operating a vessel in such a manner as to strike or otherwise injure coral, seagrass, or other immobile organisms attached to the seabed, or cause prop scarring.
- Having a vessel anchored on living coral in water less than 40 feet deep when the bottom can be seen. Anchoring on hardbottom is allowed.
- Except in officially marked channels, operating a vessel at more than 4 knots/no wake within 100 yards of residential shorelines, stationary vessels, or navigational aids marking reefs.
- Operating a vessel at more than 4 knots/no wake within 100 yards of a "divers down" flag.
- Diving or snorkeling without a dive flag.
- Operating a vessel in such a manner which endangers life, limb, marine resources, or property.
- Releasing exotic species.
- Damaging or removing markers, mooring buoys, scientific equipment, boundary buoys, and trap buoys.
- Moving, removing, injuring, or possessing historical resources.
- Taking or possessing protected wildlife.
- Using or possessing explosives or electrical charges.
- Harvesting, possessing or landing any marine life species except as allowed by the Florida Fish and Wildlife Conservation Commission Rule (68B-42 F.A.C.).

The following activities are prohibited in Great White Heron and Key West National Wildlife Refuges:

- Use of personal water crafts, hovercrafts and airboats
- Landing of airplanes, helicopters or ultra-lights
- Water skiing
- Pets on refuge islands
- Search for or removal of antiquities
- Overnight camping on refuge islands
- Open fires on refuge islands
- Cutting, damaging or removal of vegetation

The following regulations are in place for East Harbor Key, Lower Harbor Keys Wildlife Management Areas:

- A 300-foot No Access buffer zone is established around the East Harbor Key
- Idle Speed/No Wake zones are created in selected creeks of Lower Harbor Keys

Florida Fish and Wildlife Conservation Commission
Fish and Wildlife Research Institute
100 8th Avenue SE
St. Petersburg, Florida 33701
(727) 896-8626
<http://research.MyFWC.com>

Mote Marine Laboratory -
Tropical Research Laboratory
24244 Overseas Highway
Summerland Key, Florida 33042
305-745-2729
<http://isurus.mote.org/Keys>



This project was funded in part by a grant awarded from Mote Marine Laboratory's Protect Our Reefs Grants Program, which is funded by proceeds from the sale of the Protect Our Reefs specialty license plate. Learn more at www.mote.org/4reef.