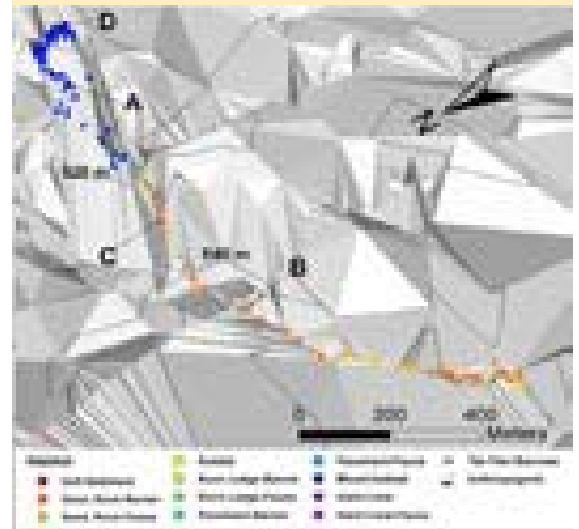


**DIVE NUMBER: JSLI-4687****STUDY AREA: Savannah Banks West****STATION OVERVIEW**

<b>Project</b>	Life on the Edge 2004
<b>Principal investigators</b>	SW Ross <sup>1</sup> KJ Sulak, MS Nizinski, E Baird
<b>PI Contact Info<sup>1</sup></b>	Center for Marine Science, 5600 Marvin Moss Ln., Wilmington, NC 28409
<b>Purpose</b>	Mapping of deep coral banks, ecological studies of macroinvertebrates and fishes, paleoclimate studies, coral genetics and educational outreach
<b>Vessel</b>	R/V Seward Johnson, Johnson Sea Link I Submersible
<b>Science Divers</b>	SW Ross (bow), K Cartwright (stern)
<b>External Video Tapes</b>	2 mini DVs, 1 HD
<b>Internal Video Tapes</b>	3 mini DVs
<b>Digital Still Photos</b>	0
<b>Positioning System</b>	dGPS
<b>CTD File</b>	<input checked="" type="checkbox"/>
<b>Specimens Collected</b>	<input checked="" type="checkbox"/>
<b>Other</b>	Hard copy of stern audio log
<b>Acknowledgements</b>	NOAA-OE, NOAA Fisheries, USGS, UNCW, NC Museum of Natural Sciences
<b>SEADESC Analyst</b>	AM Quattrini, ML Partyka
<b>Date Compiled</b>	11/16/2006

**GENERAL LOCATION****Dive Track:****DIVE DATA**

<b>Date</b>	12-Jun-04
<b>Minimum Bottom Depth (m)</b>	497
<b>Maximum Bottom Depth (m)</b>	541
<b>Start Bottom Time (EDT)</b>	8:32
<b>End Bottom End (EDT)</b>	10:13
<b>Starting Latitude (N)</b>	31° 44.357'
<b>Starting Longitude (W)</b>	79° 06.088'
<b>Ending Latitude (N)</b>	31° 44.523'
<b>Ending Longitude (W)</b>	79° 05.660'
<b>Surface Current (Kts)</b>	
<b>Bottom Current (Kts)</b>	0.7

**Image A: Mixed Habitat**  
31° 44.54' N, 79° 05.670' W



**DIVE NUMBER: JSLI-4687****STUDY AREA: Savannah Banks West****IMAGE GALLERY**

\* indicates image position is approximated

**Image B: Sand/Rubble/Rock-Barren**

31° 44.490' N, 79° 05.862' W

**Image C: Sand/Rubble/Rock-Barren**

31° 44.508' N, 79° 05.742' W

**Image D: Mixed Habitat**

31° 44.520' N, 79° 05.634' W \*

**RELEVANT WORK AND/OR LITERATURE CITED**

Milliman et al. (1967)  
 Ayers and Pilkey (1981)  
 EEZ-SCAN 87 Scientific Staff (1991)  
 Reed (2002)  
 Reed and Ross (2005)  
 Reed et al. (2006)  
 Ross and Nizinski (in press)

**BIOLOGICAL ENVIRONMENT**

Several fishes and invertebrates were observed during this dive. The most abundant fishes observed included *Nezumia sclerorhynchus*, *Laemonema barbatulum*, and *Laemonema melanurum*. Other species observed included *Fenestraja plutonia*, *Chlorophthalmus agassizi*, and *Trachyscorpia cristulata*. Galatheids were uncommon in this area. *Bathynectes* were more common and were seen throughout the mixed habitat. Other invertebrates observed included pencil urchins and starfish. No invertebrates were on the sand/rock/rubble substrate in the beginning of the dive. Sponges, *Lophelia pertusa*, and *Enallopsammia* were common sessile invertebrates.

**PHYSICAL ENVIRONMENT**

The substrate in the beginning of the dive was mostly coarse sand with few scattered small rocks and rock rubble. Mostly, fauna was absent in this area, except for a few patches of large, white sponges. The submersible then approached a mixed transitional habitat, which climbed a steep (70-80°) slope. This habitat did not have much coral development, just a few small twigs of live *Lophelia pertusa* and *Enallopsammia* on a coral rubble covered bottom. Also present in this mixed habitat were an abundance of glass sponges. Near the top of the slope, the mixed habitat became denser with greater relief (~ 1m). Sponges and live coral were more common; however, there were no large coral mounds present. Strong currents were apparent throughout this dive.

**ADDITIONAL COMMENTS**

This dive was recorded on 2 mini DVs and archived on 2 DVDs. The internal bow video was used throughout to supplement the external video when footage was too dark. The internal video was high quality.