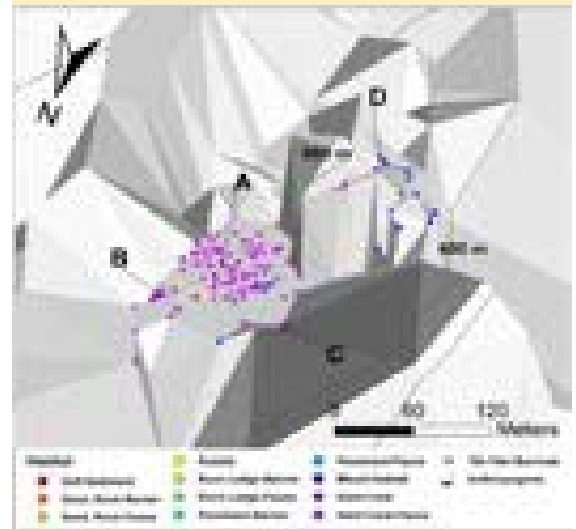


DIVE NUMBER: JSLI-4689**STUDY AREA: Stetson Banks****STATION OVERVIEW**

Project	Life on the Edge 2004
Principal investigators	SW Ross ¹ KJ Sulak, MS Nizinski, E Baird
PI Contact Info¹	Center for Marine Science, 5600 Marvin Moss Ln., Wilmington, NC 28409
Purpose	Mapping of deep coral banks, ecological studies of macroinvertebrates and fishes, paleoclimate studies, coral genetics and educational outreach
Vessel	R/V Seward Johnson, Johnson Sea Link I Submersible
Science Divers	A Howard (bow), AM Quattrini (stern)
External Video Tapes	2 mini DVs
Internal Video Tapes	2 mini DVs
Digital Still Photos	13
Positioning System	dGPS
CTD File	<input checked="" type="checkbox"/>
Specimens Collected	<input checked="" type="checkbox"/>
Other	No bow audio log, hard copy of stern audio log
Acknowledgements	NOAA-OE, NOAA Fisheries, USGS, UNCW, NC Museum of Natural Sciences
SEADESC Analyst	AM Quattrini, ML Partyka
Date Compiled	11/16/2006

GENERAL LOCATION**Dive Track:****DIVE DATA**

Date	13-Jun-04
Minimum Bottom Depth (m)	666
Maximum Bottom Depth (m)	672
Start Bottom Time (EDT)	8:37
End Bottom End (EDT)	10:37
Starting Latitude (N)	31° 49.153'
Starting Longitude (W)	77° 36.770'
Ending Latitude (N)	31° 49.153'
Ending Longitude (W)	77° 36.195'
Surface Current (Kts)	
Bottom Current (Kts)	0.4

Image A: Hard Coral-Fauna
31° 49.212' N, 77° 36.804' W



DIVE NUMBER: JSLI-4689**STUDY AREA: Stetson Banks****IMAGE GALLERY**

* indicates image position is approximated

Image B: Hard Coral
31° 49.242' N, 77° 36.780' W

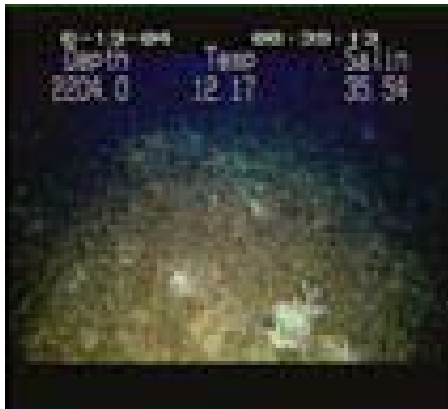


Image C: Hard Coral-Fauna
31° 49.248' N, 77° 36.846' W *



Image D: Mixed Habitat
31° 49.116' N, 77° 36.882' W *

**RELEVANT WORK AND/OR LITERATURE CITED**

- | | |
|-------------------------------------|------------------------------|
| Stetson (1961) | Williams et al. (2006) |
| Stetson et al. (1962) | Williams et al. (in press) |
| EEZ-SCAN 87 Scientific Staff (1991) | Ross and Nizinski (in press) |
| Reed (2002) | |
| Reed and Ross (2005) | |
| Reed et al. (2006) | |

BIOLOGICAL ENVIRONMENT

Very few fishes were observed on this dive. Largely, a hard coral area was observed, but only a few individuals were seen, including *Laemonema melanurum*, *Nezumia sclerorhynchus*, and *Nettenchelys exoria*. Invertebrates were diverse and common. White seastars, *Echinus tyloides*, a few galatheids, and *Bathynectes* spp. were observed in the hard coral habitat. Sessile invertebrate fauna included fly trap anemones, other anemones, alcyonaceans, and antipatharians.

PHYSICAL ENVIRONMENT

Habitat in the beginning of this dive was patchy, and included areas of coral rubble and hard corals with and without fauna. The rubble area was dense (90% cover) and had few branches of live *Lophelia pertusa*. The hard coral areas were mostly dead (~75%) *Lophelia* mounds (<2 m profile). At times, these hard coral areas were overgrown with attached fauna, including anemones and alcyonaceans.

ADDITIONAL COMMENTS

This dive was recorded on 2 mini DVs and saved on 2 DVDs for archiving. Much of the transect footage was underlit and a large amount of footage was spent zoomed in very closely. There were also problems with color-balancing and interruptions in the video feed.