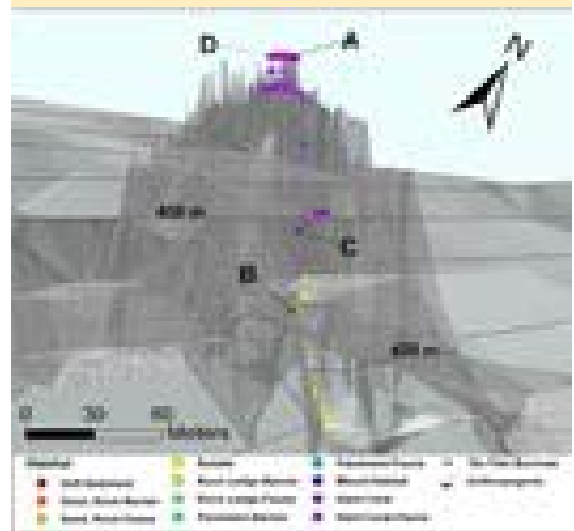


**DIVE NUMBER: JSLI-4692****STUDY AREA: Cape Lookout Lophelia A****STATION OVERVIEW**

<b>Project</b>	Life on the Edge 2004
<b>Principal investigators</b>	SW Ross <sup>1</sup> KJ Sulak, MS Nizinski, E Baird
<b>PI Contact Info<sup>1</sup></b>	Center for Marine Science, 5600 Marvin Moss Ln., Wilmington, NC 28409
<b>Purpose</b>	Mapping of deep coral banks, ecological studies of macroinvertebrates and fishes, paleoclimate studies, coral genetics and educational outreach
<b>Vessel</b>	R/V Seward Johnson, Johnson Sea Link I Submersible
<b>Science Divers</b>	KJ Sulak (bow), B Williams (stern)
<b>External Video Tapes</b>	2 mini DVs, 1 HD
<b>Internal Video Tapes</b>	1 mini DV
<b>Digital Still Photos</b>	0
<b>Positioning System</b>	dGPS
<b>CTD File</b>	<input checked="" type="checkbox"/>
<b>Specimens Collected</b>	<input checked="" type="checkbox"/>
<b>Other</b>	Hard copies of bow and stern audio logs
<b>Acknowledgements</b>	NOAA-OE, NOAA Fisheries, USGS, UNCW, NC Museum of Natural Sciences
<b>SEADESC Analyst</b>	AM Necaize, ML Partyka
<b>Date Compiled</b>	11/16/2006

**GENERAL LOCATION****Dive Track:****DIVE DATA**

<b>Date</b>	15-Jun-04
<b>Minimum Bottom Depth (m)</b>	380
<b>Maximum Bottom Depth (m)</b>	426
<b>Start Bottom Time (EDT)</b>	8:29
<b>End Bottom End (EDT)</b>	10:33
<b>Starting Latitude (N)</b>	34° 19.428'
<b>Starting Longitude (W)</b>	75° 47.172'
<b>Ending Latitude (N)</b>	34° 19.444'
<b>Ending Longitude (W)</b>	75° 47.218'
<b>Surface Current (Kts)</b>	4.1
<b>Bottom Current (Kts)</b>	0.5

**Image A: Hard Coral-Fauna**  
34° 19.452' N, 75° 47.202' W



**DIVE NUMBER: JSLI-4692**

**STUDY AREA: Cape Lookout Lophelia A**

**IMAGE GALLERY**

\* indicates image position is approximated

**Image B: Rubble**

34° 19.416' N, 75° 47.196' W



**Image C: Hard Coral**

34° 19.416' N, 75° 47.196' W



**Image D: Hard Coral-Fauna**

34° 19.428' N, 75° 47.214' W



**RELEVANT WORK AND/OR LITERATURE CITED**

Uchupi (1967)

R/V Eastward training cruise 1966 (photo in Rowe and Menzies 1968 and Menzies et al. 1973)

NR-1 submersible cruise Nov 1993 (Sulak and Ross unpubl. data)

R/V Cape Hatteras cruises Aug 2001 & Sep 2006 (S.W. Ross, unpubl. data)

EEZ-SCAN 87 Scientific Staff (1991)

Reed and Ross (2005)

Ross and Nizinski (in press)

**BIOLOGICAL ENVIRONMENT**

Few fishes and several invertebrates were observed during this dive. *Laemonema barbatulum* was present in the rubble areas. Few *Helicolenus dactylopterus* and one hagfish were present on the hard coral habitat. Brittle stars were very abundant over the surface of dead coral and occupying spaces in the hard coral mounds. A large school of squid was observed in the beginning of the dive at the base of the rubble covered slope. Other mobile invertebrates observed included pencil urchins, and *Eumunida picta*, which were common on the hard coral mounds. Attached sessile invertebrates included *Lophelia pertusa*, *Novodinia antillensis*, a few sponges, and anemones.

**PHYSICAL ENVIRONMENT**

In the beginning of the dive, a strong current was evident and visibility was poor. Two habitat types were observed: 1) coral rubble and 2) hard corals without fauna. Coral rubble uniformly covered a steep slope of ~60-70°. On top of the slope, *Lophelia pertusa* was present in large mounds (< 2m relief), which consisted of mostly dead coral with live scattered on top. Few macrofauna were attached to the hard corals.

**ADDITIONAL COMMENTS**

This dive was captured on 2 mini DVs and saved to 2 DVDs for archiving. The overall quality of this footage was fair-to-good, some of the wide angle views were dark and there was a moderate amount of marine snow.