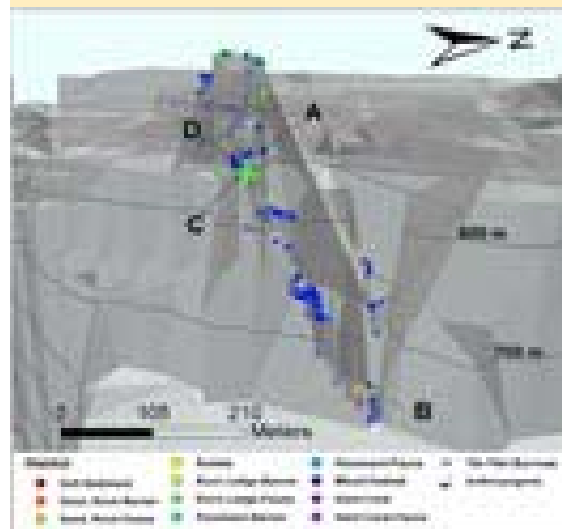


DIVE NUMBER: JSLI-4699**STUDY AREA: Stetson Banks****STATION OVERVIEW**

Project	Life on the Edge 2004
Principal investigators	SW Ross ¹ KJ Sulak, MS Nizinski, E Baird
PI Contact Info¹	Center for Marine Science, 5600 Marvin Moss Ln., Wilmington, NC 28409
Purpose	Mapping of deep coral banks, ecological studies of macroinvertebrates and fishes, paleoclimate studies, coral genetics and educational outreach
Vessel	R/V Seward Johnson, Johnson Sea Link I Submersible
Science Divers	TL Casazza (bow) E Baird (stern)
External Video Tapes	3 mini DVs, 3 HDs
Internal Video Tapes	4 mini DVs
Digital Still Photos	0
Positioning System	dGPS
CTD File	<input checked="" type="checkbox"/>
Specimens Collected	<input checked="" type="checkbox"/>
Other	Hard copy of stern audio log
Acknowledgements	NOAA-OE, NOAA Fisheries, USGS, UNCW, NC Museum of Natural Sciences
SEADESC Analyst	AM Necaie, ML Partyka
Date Compiled	11/16/2006

GENERAL LOCATION**Dive Track:****DIVE DATA**

Date	18-Jun-04
Minimum Bottom Depth (m)	658
Maximum Bottom Depth (m)	721
Start Bottom Time (EDT)	16:59
End Bottom End (EDT)	19:09
Starting Latitude (N)	31° 50.895'
Starting Longitude (W)	77° 36.724'
Ending Latitude (N)	31° 50.751'
Ending Longitude (W)	77° 36.774'
Surface Current (Kts)	
Bottom Current (Kts)	

Image A: Mixed Habitat
31° 50.736' N, 77° 36.654' W *



DIVE NUMBER: JSLI-4699

STUDY AREA: Stetson Banks

IMAGE GALLERY

* indicates image position is approximated

Image B: Rubble

31° 50.850' N, 77° 36.624' W



Image C: Rock Ledge-Fauna

31° 50.724' N, 77° 36.654' W



Image D: Mixed Habitat

31° 50.730' N, 77° 36.666' W



RELEVANT WORK AND/OR LITERATURE CITED

Stetson (1961)
Stetson et al. (1962)
EEZ-SCAN 87 Scientific Staff (1991)
Reed (2002)
Reed and Ross (2005)
Reed et al. (2006)
Williams et al. (2006)
Williams et al. (in press)
Ross and Nizinski (in press)

BIOLOGICAL ENVIRONMENT

Laemonema melanurum and *Nezumia sclerorhynchus* were two commonly observed fish species in the area. Crinoids, urchins, fly trap anemones, *Bathynectes longispina*, sponges, and a diversity of corals were the invertebrates observed during the dive. Coral diversity included several species of antipatharians, scleractinians, alcyonaceans, and isidids.

PHYSICAL ENVIRONMENT

Habitats in this area were patchy. The following were observed during this dive: 1) coral rubble, 2) mixed coral community, and 3) rock ledges with attached fauna. In the rubble zone, there were few soft corals, isidids, fly trap anemones, and sponges. The mixed community consisted of a diversity of antipatharians, isidids, cup corals, alcyonaceans, sponges, and solitary colonies of *Lophelia pertusa* and *Enallopsammia* spp. The substrate of the mixed community was coral rubble and sand. These corals were also attached to rock ledges, which were low profile (< 1m).

ADDITIONAL COMMENTS

This dive was recorded on 3 mini DVs and saved to 3 DVDs for archiving. In the first DV, there was a lot of interruption in the video feed and underlit transect footage. The third DV contains footage of the ascent and sub recovery.