

DIVE NUMBER: JSLII-3429

STUDY AREA: Cape Lookout Lophelia B

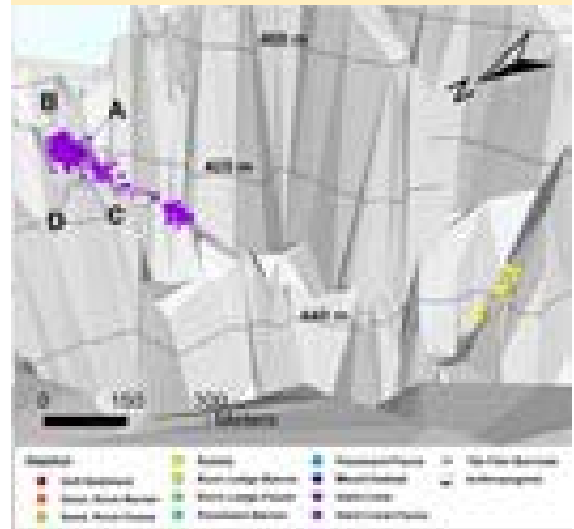
STATION OVERVIEW

Project	Life on the Edge 2003
Principal investigators	SW Ross ¹ KJ Sulak, MS Nizinski, E Baird
PI Contact Info¹	Center for Marine Science, 5600 Marvin Moss Ln., Wilmington, NC 28409
Purpose	Mapping of deep coral banks, ecological studies of macroinvertebrates and fishes, paleoclimate studies, coral genetics and educational outreach
Vessel	R/V Seward Johnson, Johnson Sea Link II Submersible
Science Divers	KJ Sulak (bow), AM Quattrini (stern)
External Video Tapes	3 mini DVs
Internal Video Tapes	1 mini DV
Digital Still Photos	203
Positioning System	dGPS
CTD File	<input checked="" type="checkbox"/>
Specimens Collected	<input checked="" type="checkbox"/>
Other	Hard copy of bow audio log
Acknowledgements	NOAA-OE, NOAA Fisheries, USGS, UNCW, NC Museum of Natural Sciences
SEADESC Analyst	AM Necaie, AM Quattrini, ML Partyka
Date Compiled	11/16/2006

GENERAL LOCATION



Dive Track:



DIVE DATA

Date	23-Aug-03
Minimum Bottom Depth (m)	412
Maximum Bottom Depth (m)	450
Start Bottom Time (EDT)	8:54
End Bottom End (EDT)	11:10
Starting Latitude (N)	34° 11.151'
Starting Longitude (W)	75° 54.028'
Ending Latitude (N)	34° 11.421'
Ending Longitude (W)	75° 53.753'
Surface Current (Kts)	
Bottom Current (Kts)	0.1

Image A: Hard Coral
34° 11.406' N, 75° 53.754' W



DIVE NUMBER: JSLII-3429

STUDY AREA: Cape Lookout Lophelia B

IMAGE GALLERY

* indicates image position is approximated

Image B: Hard Coral

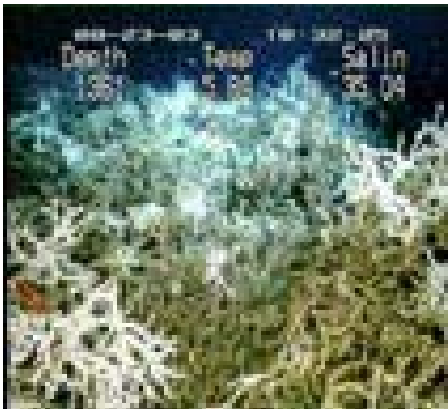
34° 11.412' N, 75° 53.754' W

Image C: Hard Coral

34° 11.412' N, 75° 53.766' W

Image D: Hard Coral

34° 11.418' N, 75° 53.754' W *



RELEVANT WORK AND/OR LITERATURE CITED

R/V Cape Hatteras cruises Aug 2001 & Sep 2006 (S.W. Ross, unpubl. data)
EEZ-SCAN 87 Scientific Staff (1991)
Reed and Ross (2005)
Ross and Nizinski (in press)

BIOLOGICAL ENVIRONMENT

The most common species observed during this dive were *Laemonema barbatulum*, *L. melanurum*, *Polyipnus clarus* and *Hoplostethus occidentalis*. Other species present included *Myxine glutinosa*, *Maurollicus weitzmani* and *Dysommima rugosa*. A tremendous number of amphipods and/or mysids were found in the water column over the reef throughout the second half of the dive. Next to these, the most common mobile invertebrates were spiny urchins, *Eumunida picta* and *Rochinia crassa*. Sessile invertebrates were less common, with only scattered anemones, basket stars and sparse living *Lophelia pertusa*.

PHYSICAL ENVIRONMENT

The dive began over a sloping rubble habitat, but the transition to the main hard coral reef was not recorded. The second DV began almost 100' shallower than the first DV ended. The second half of the dive covered a dense, complex *Lophelia* thicket of moderate-to-high-relief with large interstices. Most of the coral was dead with live coral only at the tips, though there were scattered large colonies of living *Lophelia*.

ADDITIONAL COMMENTS

This dive was recorded on 2 mini DVs and saved to 2 DVDs. The first DV contained only 5 minutes of very dark video. The second DV began a full hour after the first one ended. There was no internal bow video from which to recover the lost data. At times, the footage on the second DV was filmed too close, out of focus, too bright or pointing out into the water column. There was condensation on the inner lens of the camera that at times obscured the view.