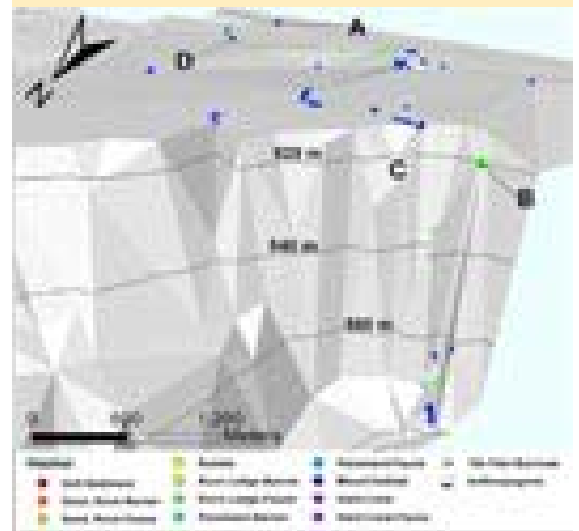


**DIVE NUMBER: JSLII-3461****STUDY AREA: Charleston Bump****STATION OVERVIEW**

<b>Project</b>	Estuary to the Abyss 2004
<b>Principal investigators</b>	GR Sedberry <sup>1</sup>
<b>PI Contact Info<sup>1</sup></b>	Marine Resources Research Institute, SCDNR P.O. Box 12559 Charleston SC 29422-2559
<b>Purpose</b>	To investigate a sponge-lined cliff reported by Popenone and Manheim (2001).
<b>Vessel</b>	R/V Seward Johnson 2, Johnson Sea Link II Submersible
<b>Science Divers</b>	LR Sautter (bow), S Griffin (stern)
<b>External Video Tapes</b>	3 mini DVs
<b>Internal Video Tapes</b>	
<b>Digital Still Photos</b>	
<b>Positioning System</b>	dGPS
<b>CTD File</b>	<input checked="" type="checkbox"/>
<b>Specimens Collected</b>	<input checked="" type="checkbox"/>
<b>Other</b>	
<b>Acknowledgements</b>	NOAA-OE
<b>SEADESC Analyst</b>	ML Partyka
<b>Date Compiled</b>	12/19/2006

**GENERAL LOCATION****Dive Track:****DIVE DATA**

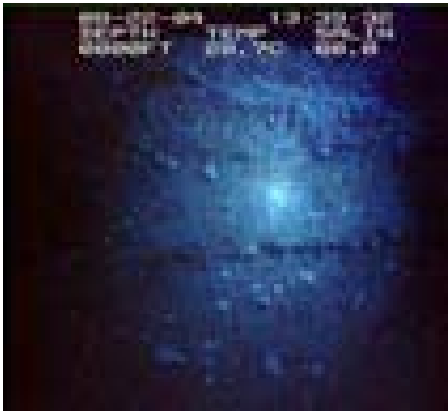
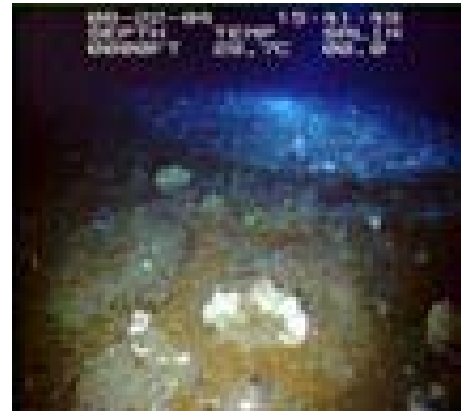
<b>Date</b>	22-Aug-04
<b>Minimum Bottom Depth (m)</b>	513
<b>Maximum Bottom Depth (m)</b>	581
<b>Start Bottom Time (EDT)</b>	13:23
<b>End Bottom End (EDT)</b>	16:08
<b>Starting Latitude (N)</b>	31° 15.522'
<b>Starting Longitude (W)</b>	78° 56.357'
<b>Ending Latitude (N)</b>	31° 13.806'
<b>Ending Longitude (W)</b>	78° 55.056'
<b>Surface Current (Kts)</b>	
<b>Bottom Current (Kts)</b>	0.7

**Image A: Mixed Habitat**  
31° 13.806' N, 78° 55.056' W



**DIVE NUMBER: JSLII-3461****STUDY AREA: Charleston Bump****IMAGE GALLERY**

\* indicates image position is approximated

**Image B: Rock Ledge-Fauna**  
31° 15.390' N, 78° 56.316' W**Image C: Mixed Habitat**  
31° 15.426' N, 78° 56.244' W**Image D: Mixed Habitat**  
31° 15.078' N, 78° 55.098' W**RELEVANT WORK AND/OR LITERATURE CITED**

Popenoe and Manheim (2001)  
Sedberry (2001)

**BIOLOGICAL ENVIRONMENT**

Numerous fishes were observed during the course of this dive including *Laemonema melanurum*, *Nezumia sclerorhynchus*, *Polyprion americanus*, *Squalus* spp. and *Scyliorhinus retifer*. Mobile invertebrates were less common. These included pencil urchins, spiny orange urchins, sea stars, a slip shell and an octopus. The sessile invertebrate community was both diverse and densely populated. Hard and soft corals, such as *Stylaster*, cup corals, primnoids, whip corals and isidids dominated most of the area. A variety of sponges and anemones were abundant. A large black coral completely covered in colonial anthozoans was also observed.

**PHYSICAL ENVIRONMENT**

This dive began in a dense, low-relief (<1m) mixed habitat community covered in a combination of coral rubble and fine sediments. Initial rock ledge habitats encountered were made up of low-relief, large manganese slabs which gave way to a towering wall. The entire wall was covered in a dense community of sponges and soft corals. The top of the wall was a flat, mixed habitat plateau with a combination of oxidized sediments, hard-pan rock and manganese slabs.

**ADDITIONAL COMMENTS**

This dive was recorded on 3 mini DVs. While the water-quality was excellent, most of the footage was underlit, making identifications of macrofauna difficult. The CTD data overlay was incorrect throughout the dive, though the data collected was correct. There was also condensation on the inner camera lens that often blurred and obscured portions of the view. Sediment, rocks, a sponge and crinoids were collected.