



Florida Department of Environmental Protection

**WATER QUALITY
PROTECTION PROGRAM
TECHNICAL ADVISORY
COMMITTEE**

JULY 14, 2016





WQPP and the Technical Advisory Committee (TAC)

Steering Committee

WQPP Guidance, Policy and
Decision Making



The TAC

Assists with Design,
Prioritization and Peer
Review for WQPP
Research and Monitoring
Programs



The Management Committee

Coordinates the
Activities of the Steering
Committee and the TAC



WQPP Steering Committee Meeting (3/2/2016)

The Steering Committee Passed a Motion to Reconvene the TAC and Schedule a Workshop:

- **To review existing monitoring programs in the FKNMS and Compile an inventory of these activities.**
- **Identify potential gaps and monitoring priorities that may need to be addressed to achieve the goals and objectives of the WQPP.**
- **Identify opportunities for partnerships to avoid duplication of efforts and for sharing information.**
- **The results of the workshop will be presented at the next Steering Committee Meeting (September 7, 2016).**



WQPP GOALS AND OBJECTIVES (WQPP Report to Congress 2013)

- Recommend priority corrective actions and compliance schedules to address sources of pollution.
- Ensure compliance with applicable laws and adopt appropriate water quality standards for the FKNMS.
- **Create a comprehensive monitoring program.**
- Identify sources of funding for implementation of the program.
- provide a mechanism for state and local government consultation and public participation



WQPP Monitoring Program (Water Quality, Corals & Seagrass)

- **Baselines established - monitoring programs detect status and trends**
- **Correlative data for biological studies**
- **Document improvements in canals and nearshore waters resulting from better wastewater and stormwater management and canal restoration projects.**
- **Provides critical and crucial information for effective adaptive management**
- **Provide early warning system for far-field sources**
 - **South Florida Restoration (Everglades)**
 - **Algal blooms – SW Florida Shelf / Florida Bay**
 - **Gulf spills**
 - **Nutrient transport from Mississippi River**
 - **Upwelling detection**



WQPP Website



http://ocean.floridamarine.org/FKNMS_WQPP/pages/wqpp.html

Steve Blackburn

Florida Keys Coordinator

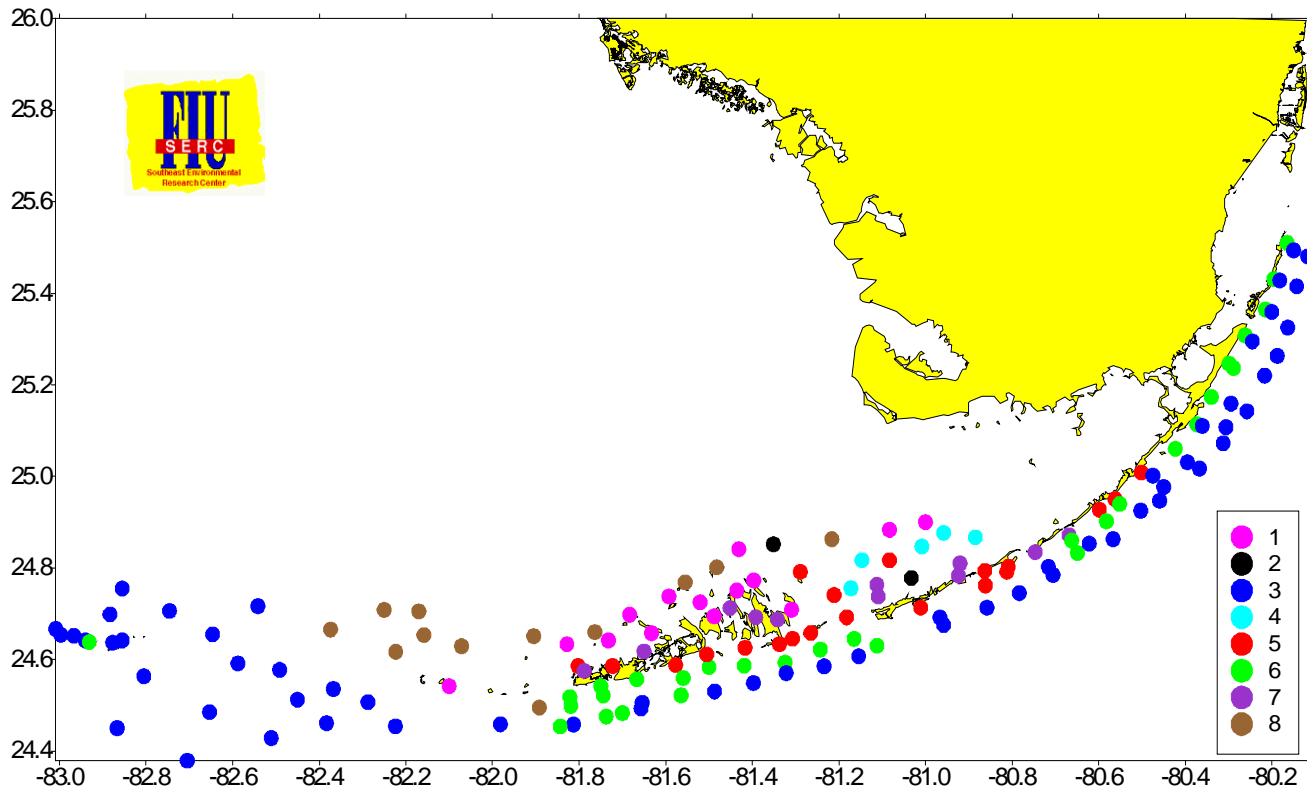
Phone: (404) 562-9385

blackburn.steven@epamail.epa.gov



Water Quality Monitoring

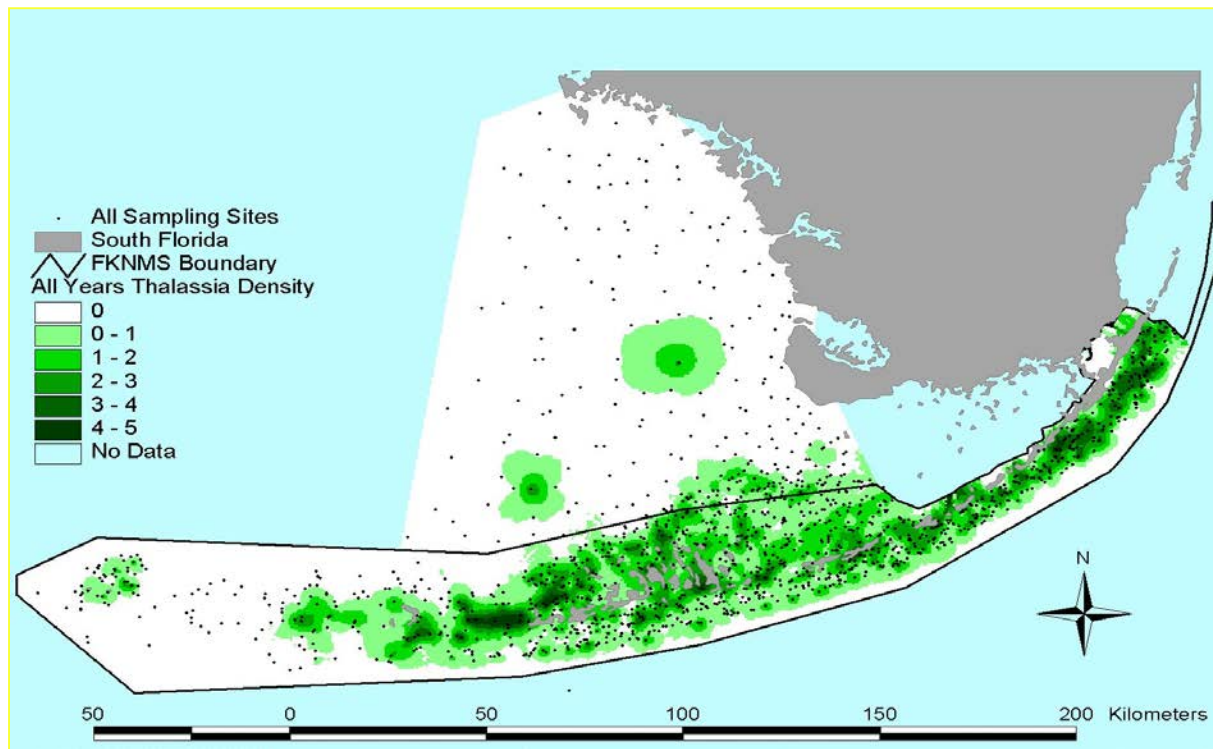
- **Florida International University, Southeast Environmental Research Center; Henry Briceno**
 - serc.fiu.edu/wqmnetwork/





WQPP Seagrass Monitoring

- **Seagrass Monitoring Project (1996):** Florida International Univ., Southeast Environmental Research Center; Fourqurean et al.
<http://seagrass.fiu.edu/>





Monitoring to Satisfy Regulatory Requirements

- 1. Permits: Wastewater, Solid Waste, Stormwater and Waste Cleanup (Land-based discharges)**
 - **Wastewater treatment plants and injection wells** - Discharge Monitoring Reports – Rule 62-600.300, F.A.C. and Section 403.086(10), F.S.
 - **NPDES (stormwater)**
 - **Groundwater Monitoring Wells** – Wastewater, Solid Waste facilities and Waste Cleanup Sites /Petroleum Storage Tanks. (Chapters 62-520 and 62-777, F.A.C.)
- 2. Environmental Resource Permits and Submerged lands Leases for Marinas and Mooring Fields** (Chapters 62-330 and 18-21, F.A.C. and Chapters 403 and 373, F.S.)
- 3. Assessment of Impaired Surface Waters** (Chapters 62-302, and 62-303, F.A.C.) – TMDL and FKRAD.

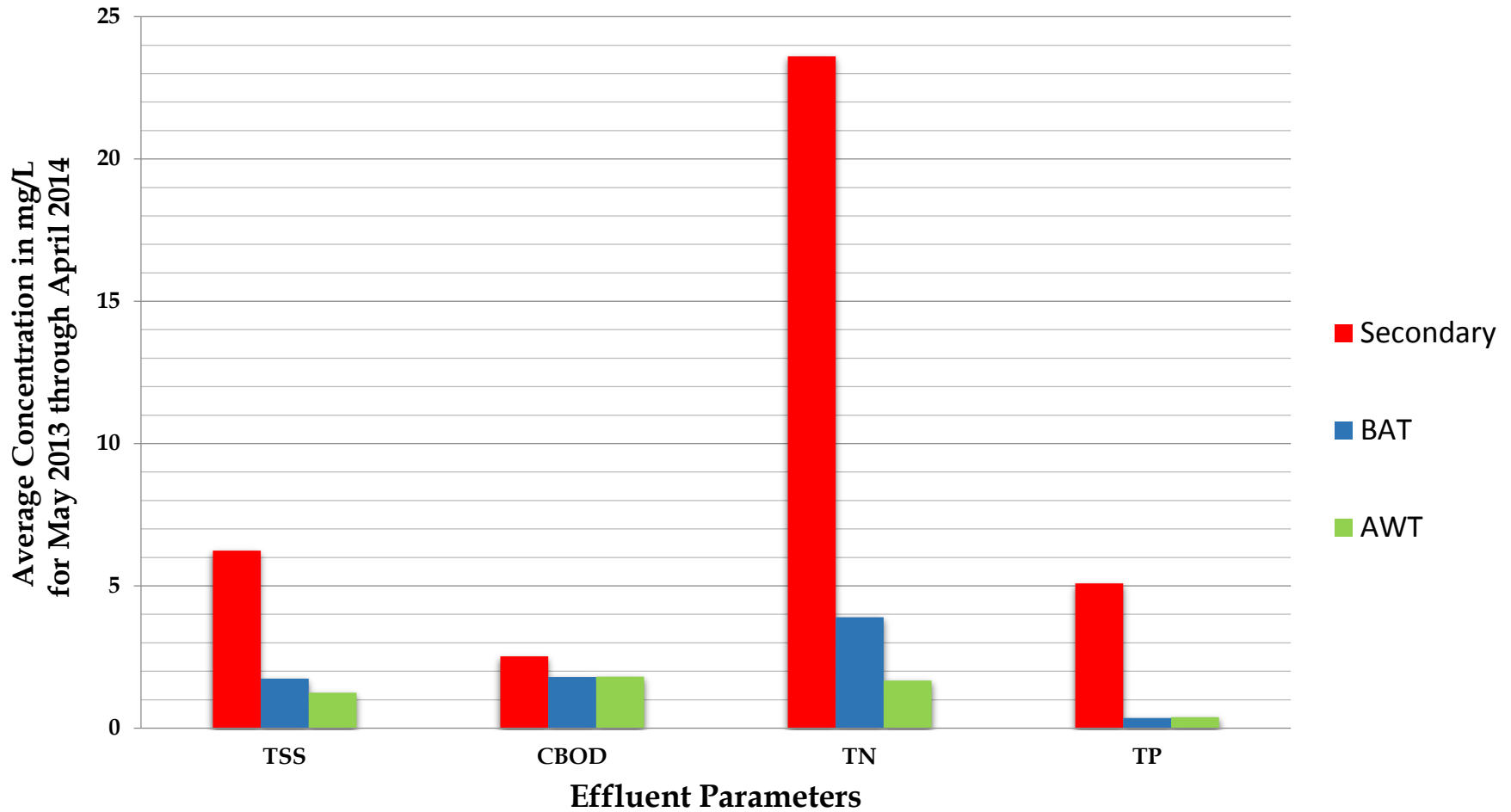


WASTEWATER TREATMENT STANDARDS 403.086(10), F.S.

	BOD	TSS	TN	TP
Effluent concentration in milligrams per liter (mg/L) as annual average				
Facilities with design flow less than 100,000 GPD	10	10	10	1
Facilities with design flow equal to or greater than 100,000 GPD	5	5	3	1
GPD = gallons per day				



Keys Wastewater Effluent Data





FDEP Electronic Documents



Oculus 5.6.2

Login ID:

Password:

Login

Change Password

Public Users please use the button below to log directly into OCULUS.

PUBLIC OCULUS LOGIN

Changes in the new version of OCULUS - [DEP Users](#) : [Public Users](#)

For OCULUS support, please e-mail: service@dep.state.fl.us



OCULUS Login

<http://depedms.dep.state.fl.us/Oculus/>

Oculus (Search: Press square button with the three Dots ...)

<http://depedms.dep.state.fl.us/Oculus/servlet/login?action=login>

The screenshot shows the OCULUS web application interface. At the top, there are 'Search' and 'Clear' buttons. Below them are search filters for County, District, Facility-Site ID, and Document Date (From/To). The Facility-Site ID field includes a search icon (three dots in a square). The browser address bar shows the URL: http://depedms.dep.state.fl.us/?catalog=5&profile=Cleanup_Remediation&CallingProperty=Facility-Inter...

Search Criteria

=	▼	Program		▼
=	▼	District		▼
=	▼	County		▼
*	▼	Facility ID		
*	▼	Facility Name		
*	▼	Address		
*	▼	City		
=	▼	Permit Number		
		Application		
=	▼	Number		

Search Reset



DEP BUSINESS PORTAL

<http://dep.state.fl.us/mainpage/default.htm>

<http://www.fldepportal.com/go/>

New version of the STORET Public Access (SPA) application is available by clicking the following link:

- <http://prodenv.dep.state.fl.us/DearSpa>





Questions and Comments

Never Give up!

**Gus Rios,
Environmental Administrator
(305) 289-7081
Gus.Rios@dep.state.fl.us**

