

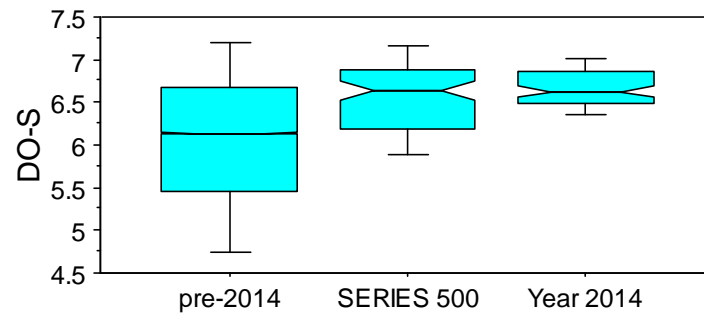
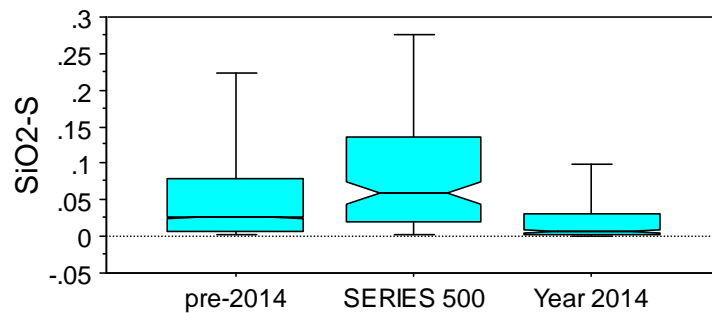
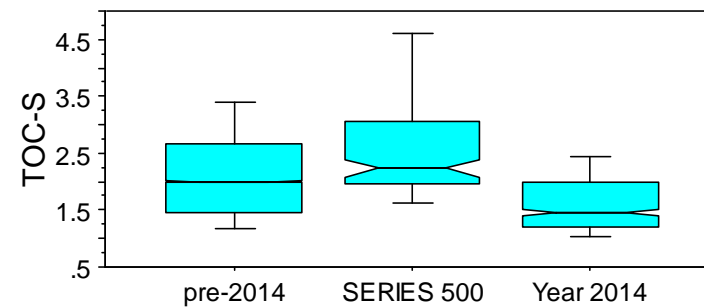
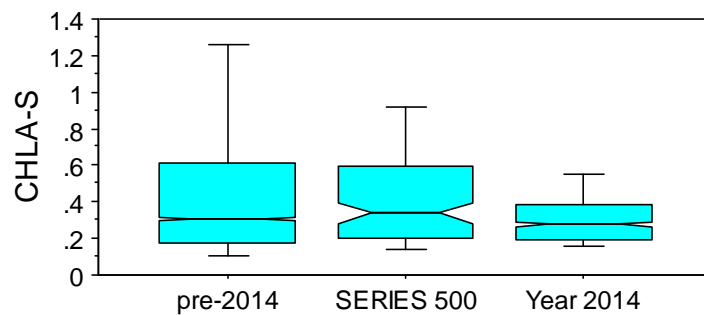
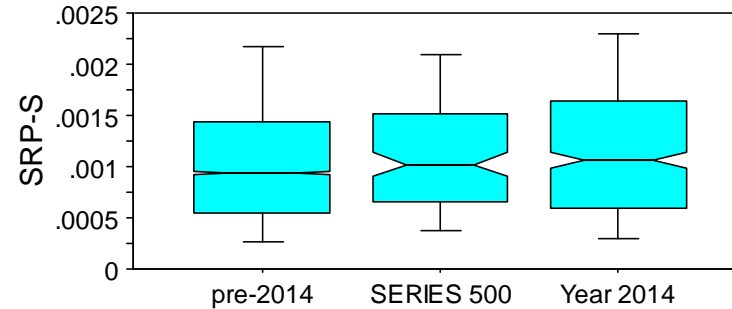
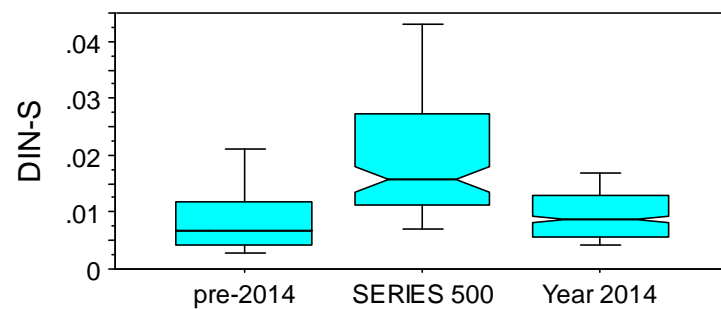
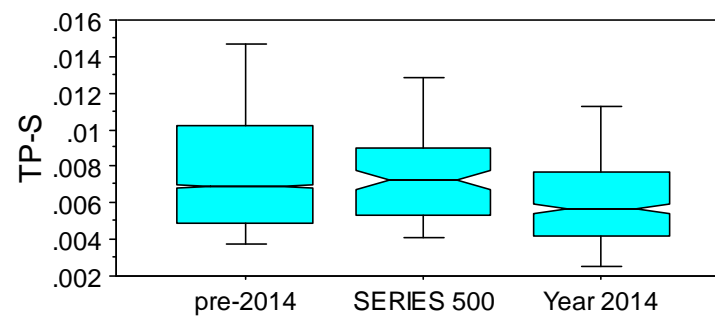
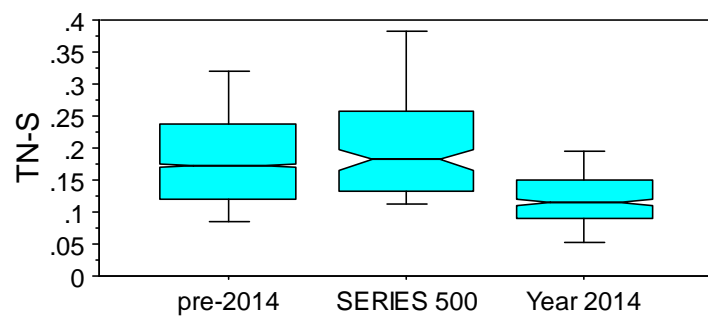
# **WATER QUALITY MONITORING PROJECT FOR FLORIDA KEYS NATIONAL MARINE SANCTUARY**

**FKNMS Steering Committee Meeting  
Marathon, Florida  
03/11/2015**

Henry O. Briceño & Alexandra Serna

Southeast Environmental Research Center  
Florida International University  
Miami, FL 33199





## EPA WQPP Water Quality Targets

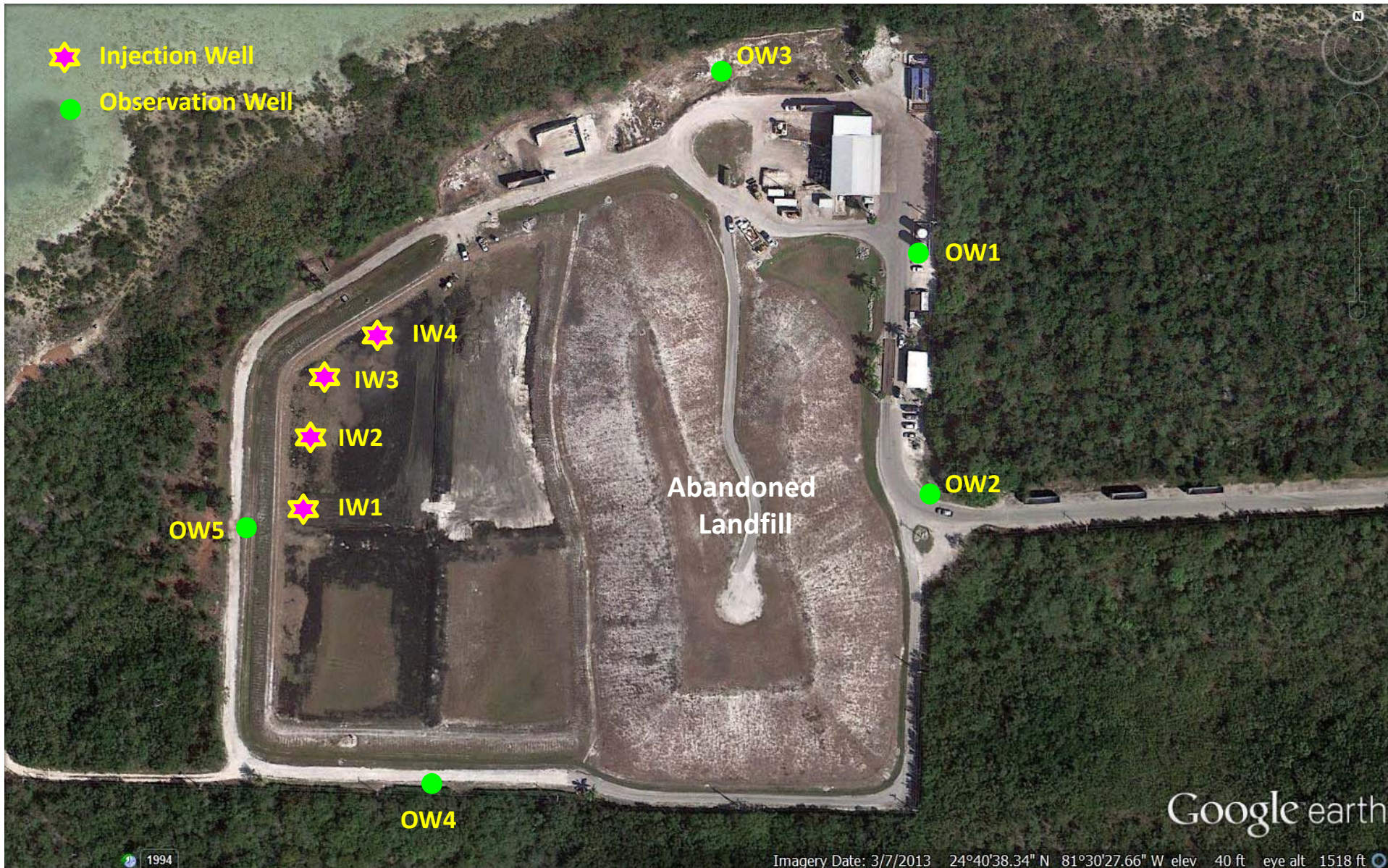
Year	Reef Stations		All Stations	
	CHLA $\leq 0.35 \mu\text{g l}^{-1}$	$K_d \leq 0.20 \text{ m}^{-1}$	DIN $\leq 0.75 \mu\text{M}$ (0.010 ppm)	TP $\leq 0.25 \mu\text{M}$ (0.0077 ppm)
1995-05	1778 of 2367 (75.1%)	1042 of 1597 (65.2%)	7826 of 10254 (76.3%)	7810 of 10267 (76.1%)
2006	196 of 225 (87.1%)	199 of 225 (88.4%)	432 of 990 (43.6%)	316 of 995 (31.8%)
2007	198 of 226 (87.6%)	202 of 222 (91.0%)	549 of 993 (55.3%)	635 of 972 (65.3%)
2008	177 of 228 (77.6%)	181 of 218 (83.0%)	836 of 1,000 (83.6%)	697 of 1,004 (69.4%)
2009	208 of 228 (91.2%)	189 of 219 (86.3%)	858 of 1,003 (85.5%)	869 of 1,004 (86.6%)
2010	170 of 227 (74.9%)	176 of 206 (85.4%)	843 of 1,000 (84.3%)	738 of 1,003 (73.6%)
2011	146 of 215 (67.9%)	156 of 213 (73.2%)	432 of 569 (75.9%)	507 of 569 (89.1%)
2012	142 of 168 (84.5%)	135 of 168 (80.4%)	268 of 447 (60.0%)	368 of 447 (82.3%)
2013	148 of 172 (86.0%)	115 of 172 (66.9%)	290 of 448 (64.7%)	353 of 448 (78.8%)
2014	64 of 172 (37.2%)	PENDING	245 of 447 (54.8%)	325 of 447 (72.7%)

# Cudjoe Key Dye-injection Project

# Background

- FIU advise requested by FKAA and NGOs
- Assessment of potential connection between injection level and surface waters
- Design and implementation of tracer-injection test









## Interpretation of Underground Geology

